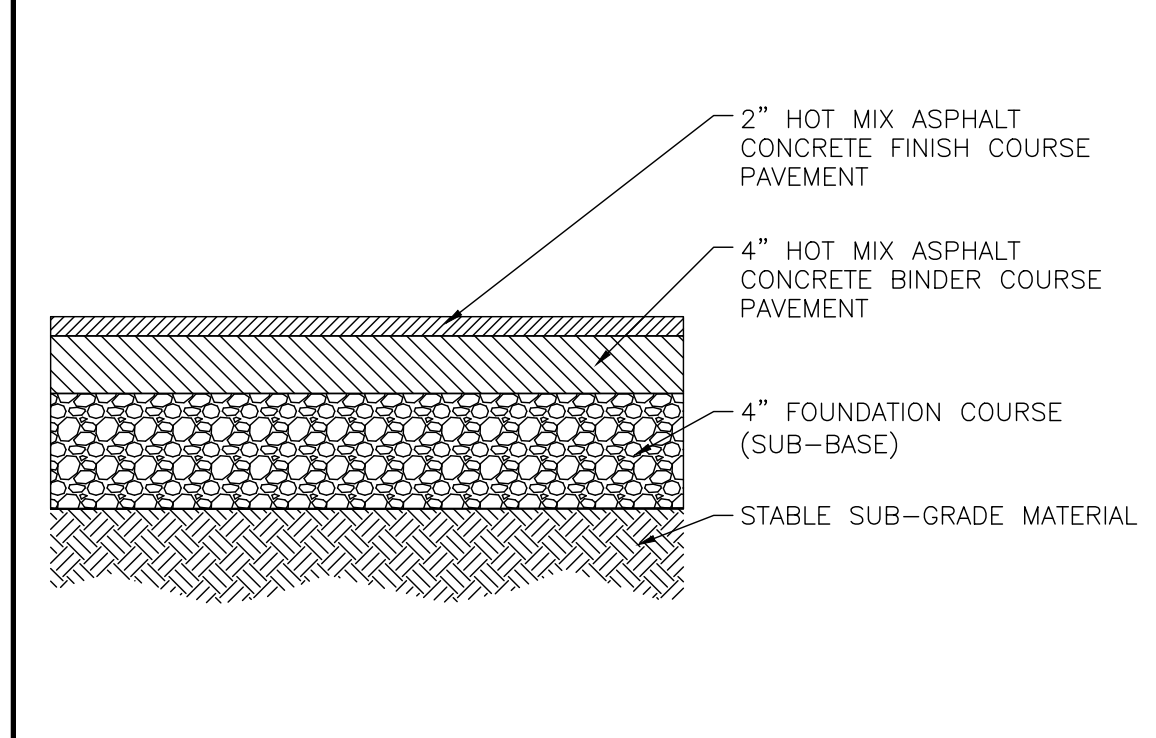
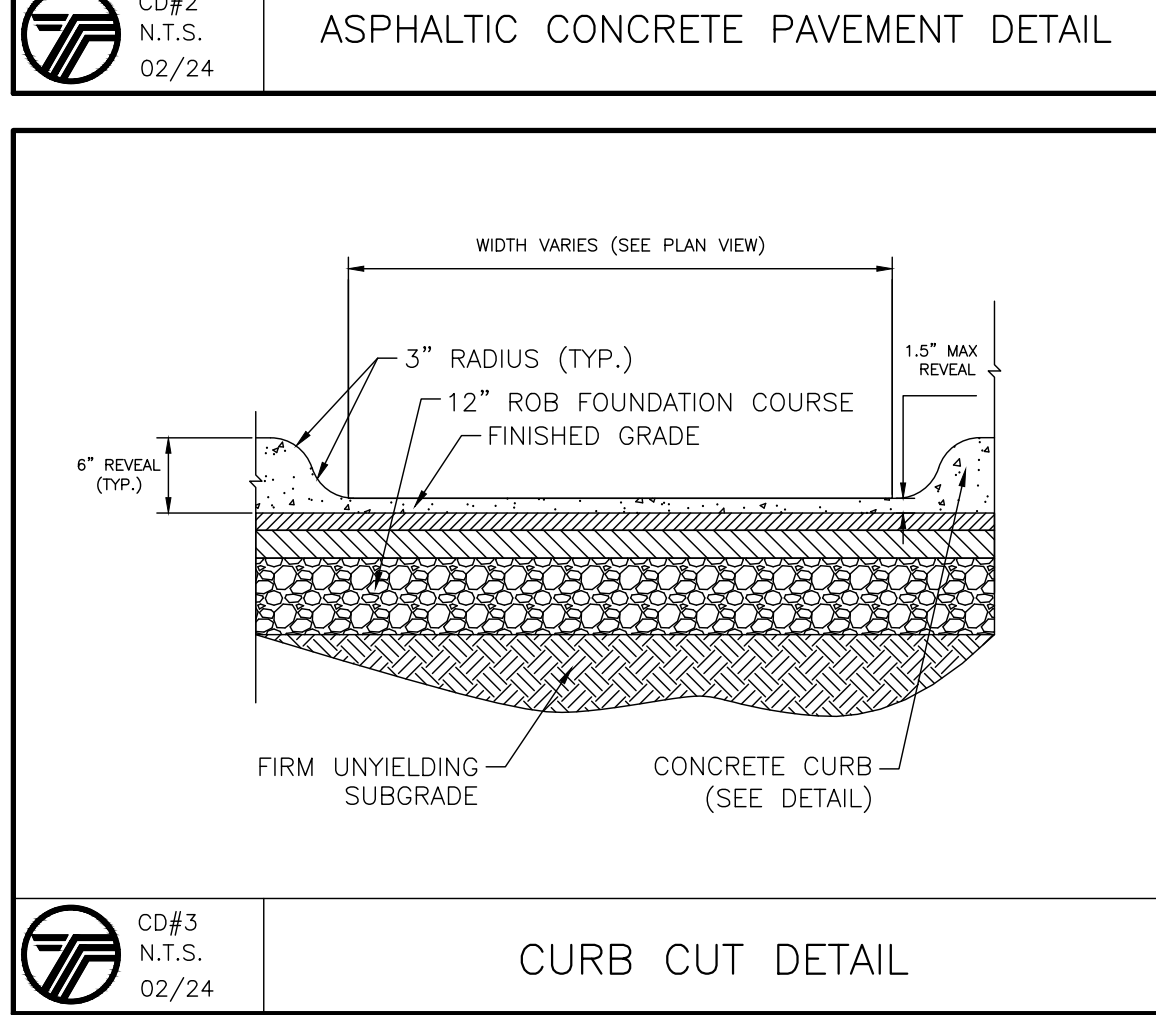


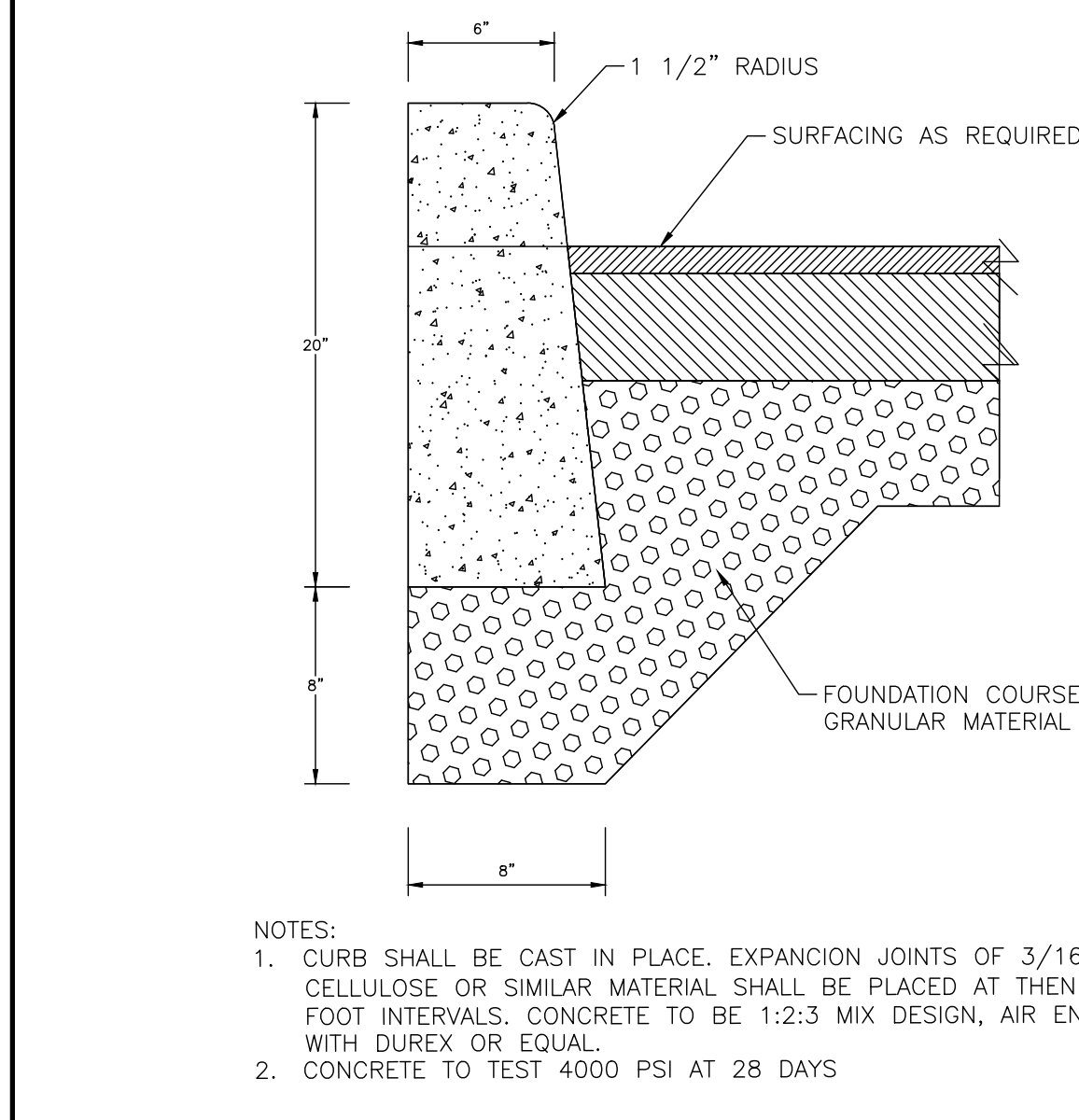
CD#1
N.T.S.
02/24



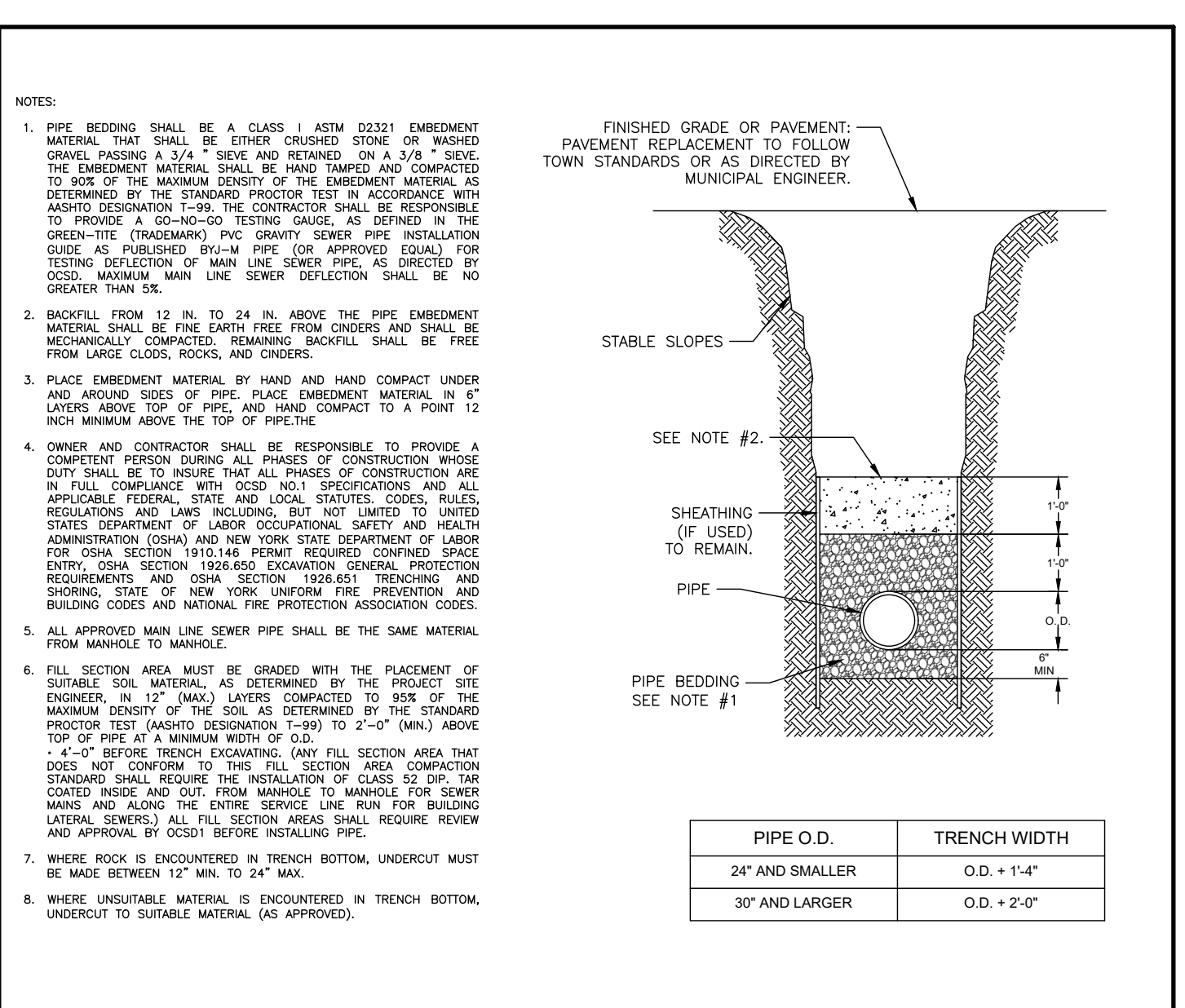
CD#2
N.T.S.
02/24



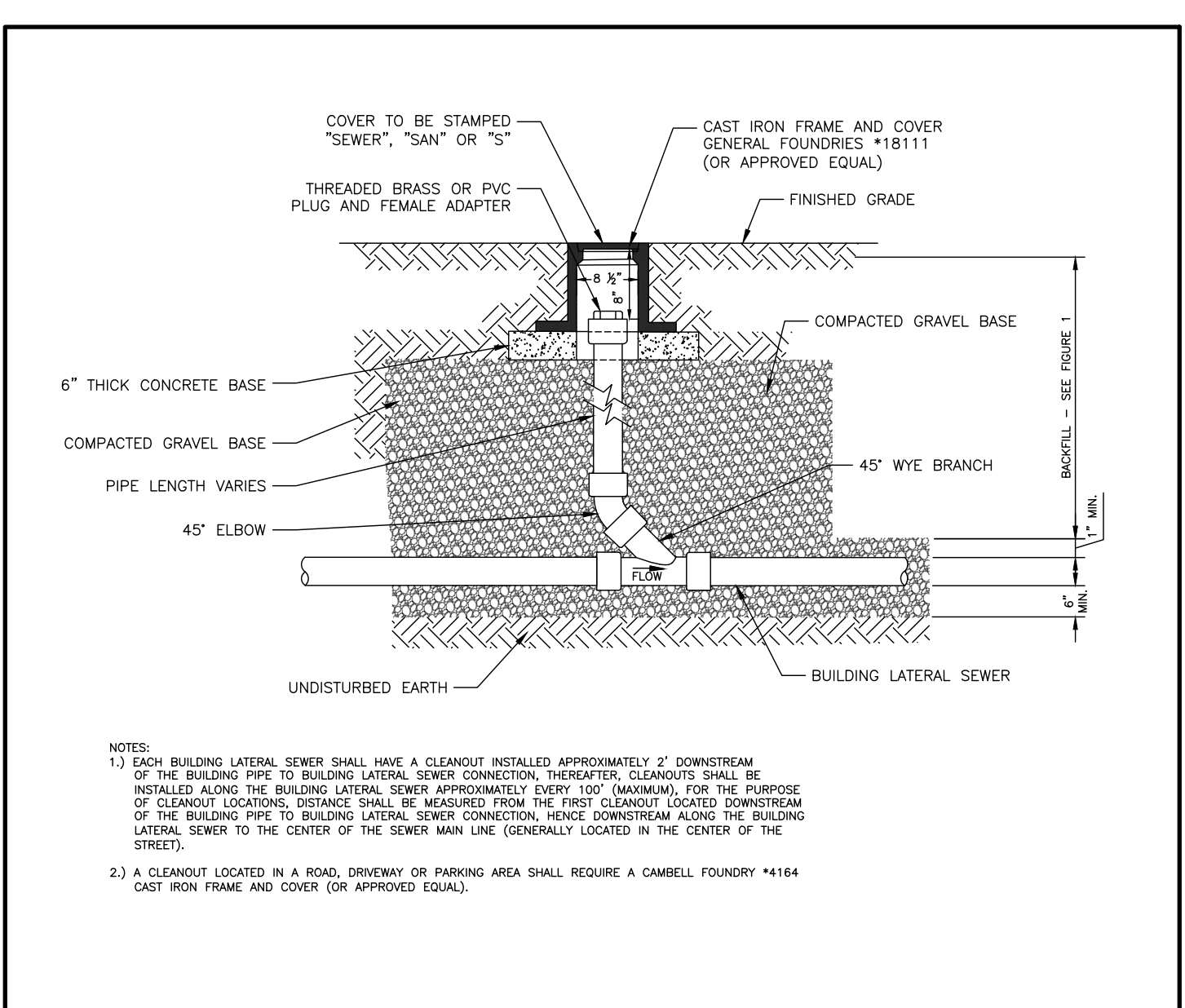
CD#3
N.T.S.
02/24



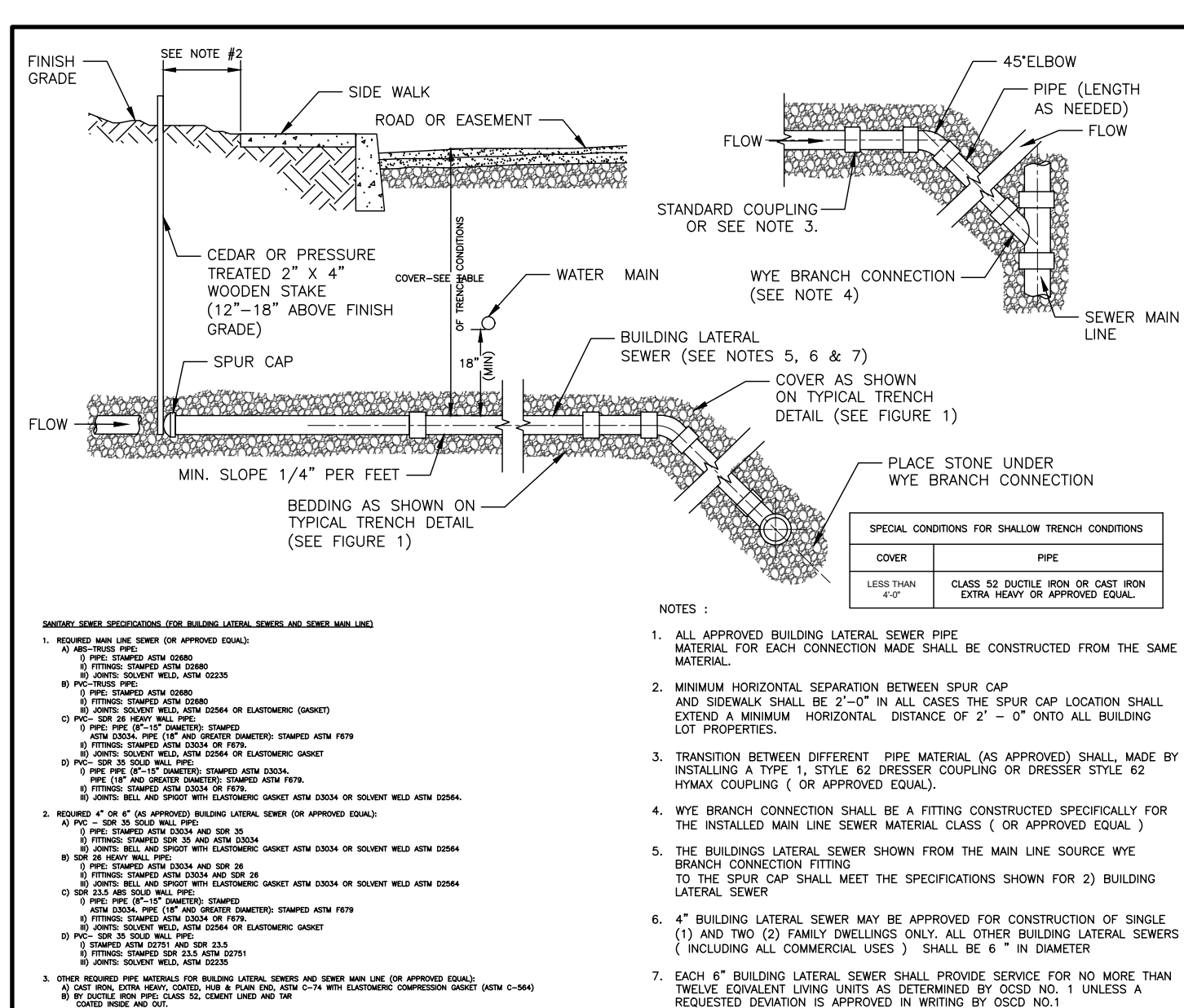
CD#4
N.T.S.
02/24



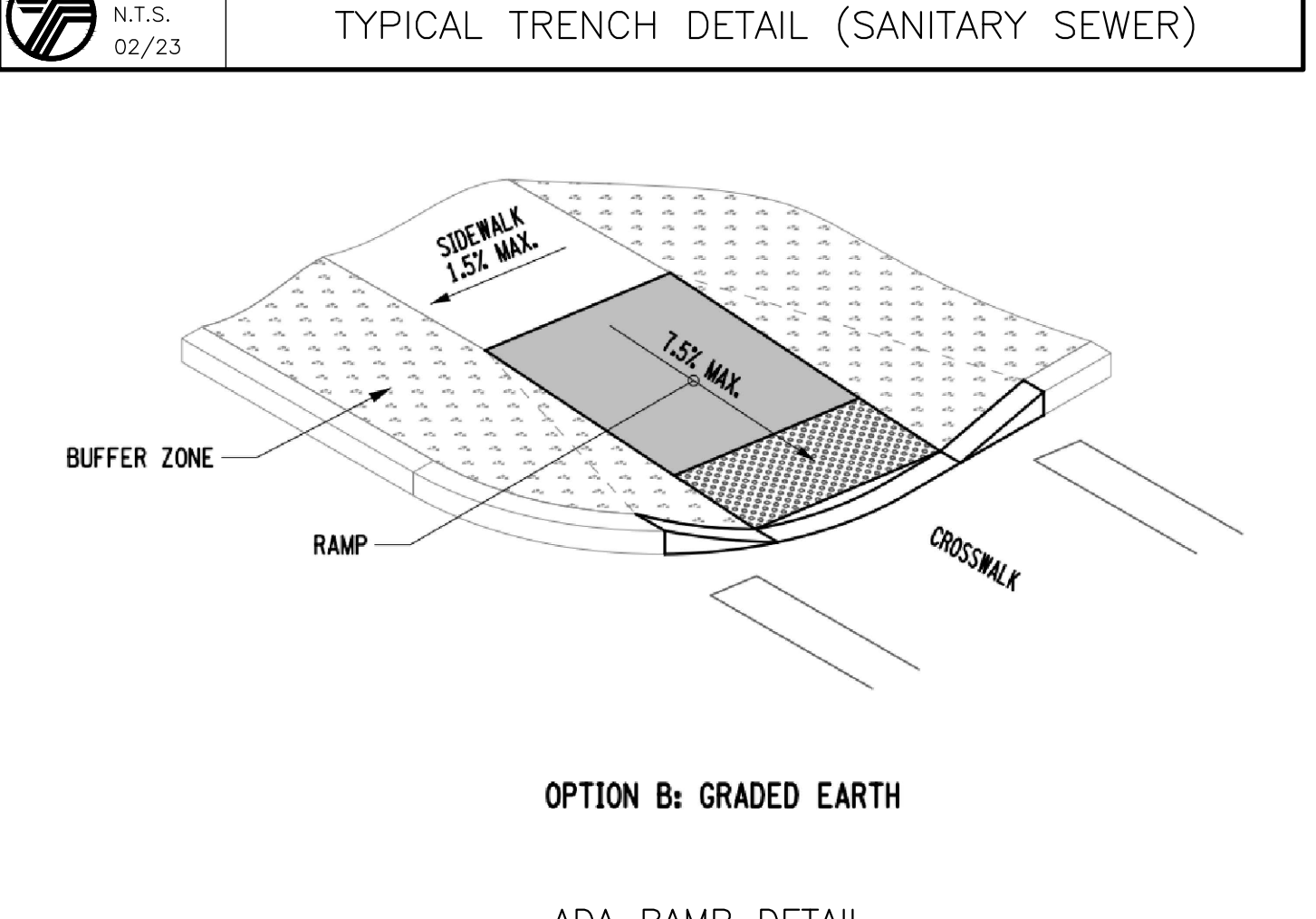
UT #4
N.T.S.
02/23



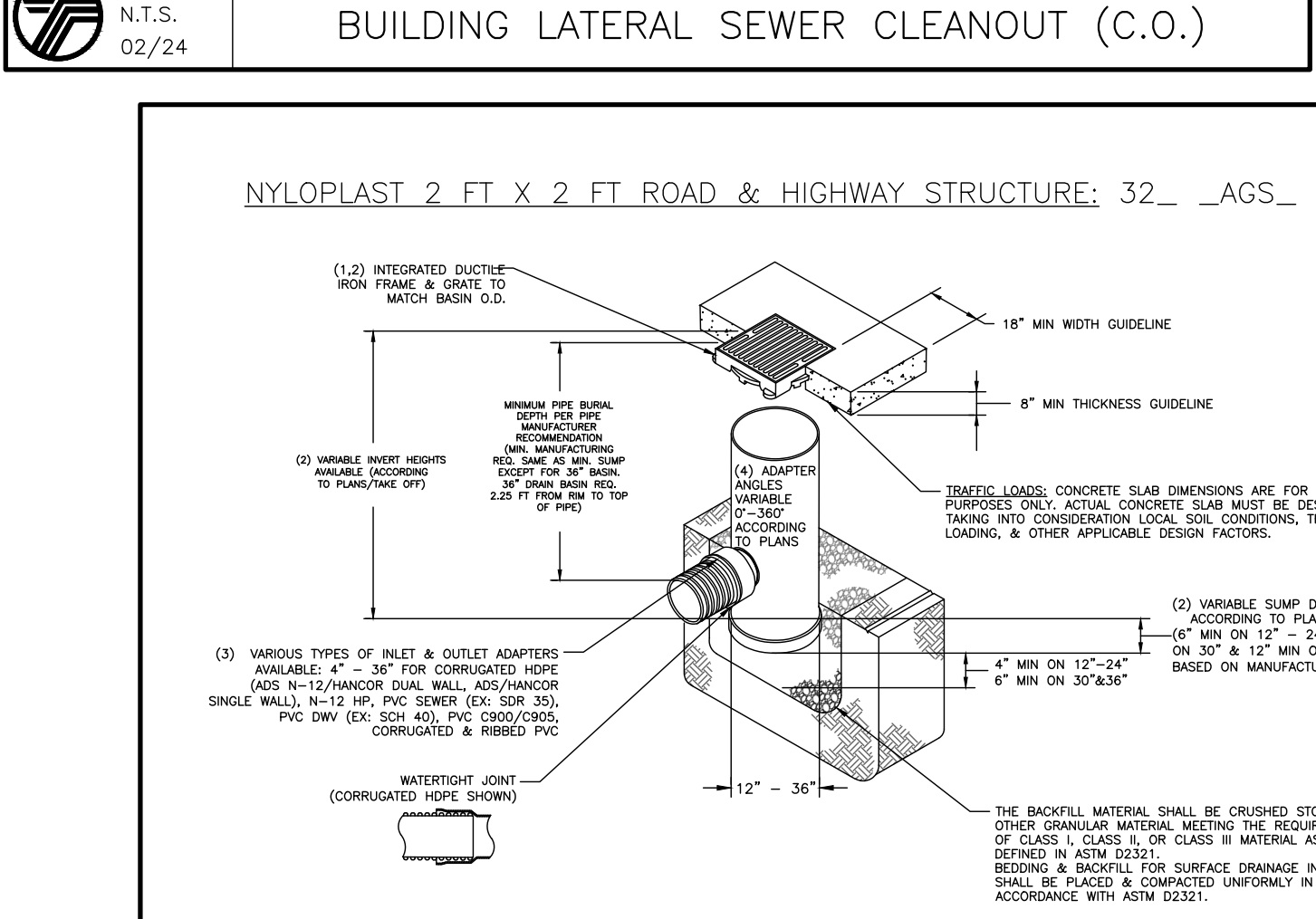
UT#1
N.T.S.
02/24



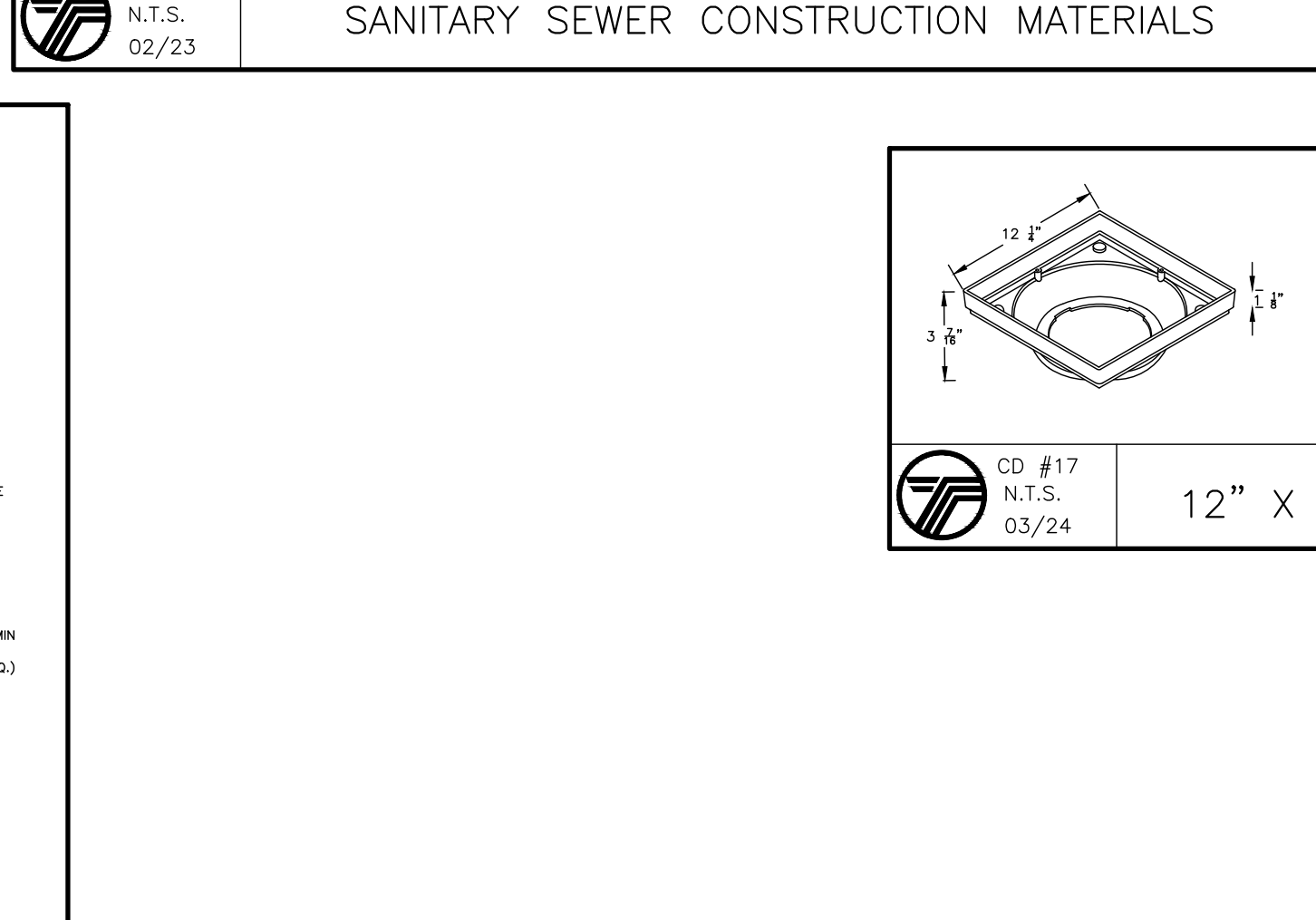
UT #7
N.T.S.
02/23



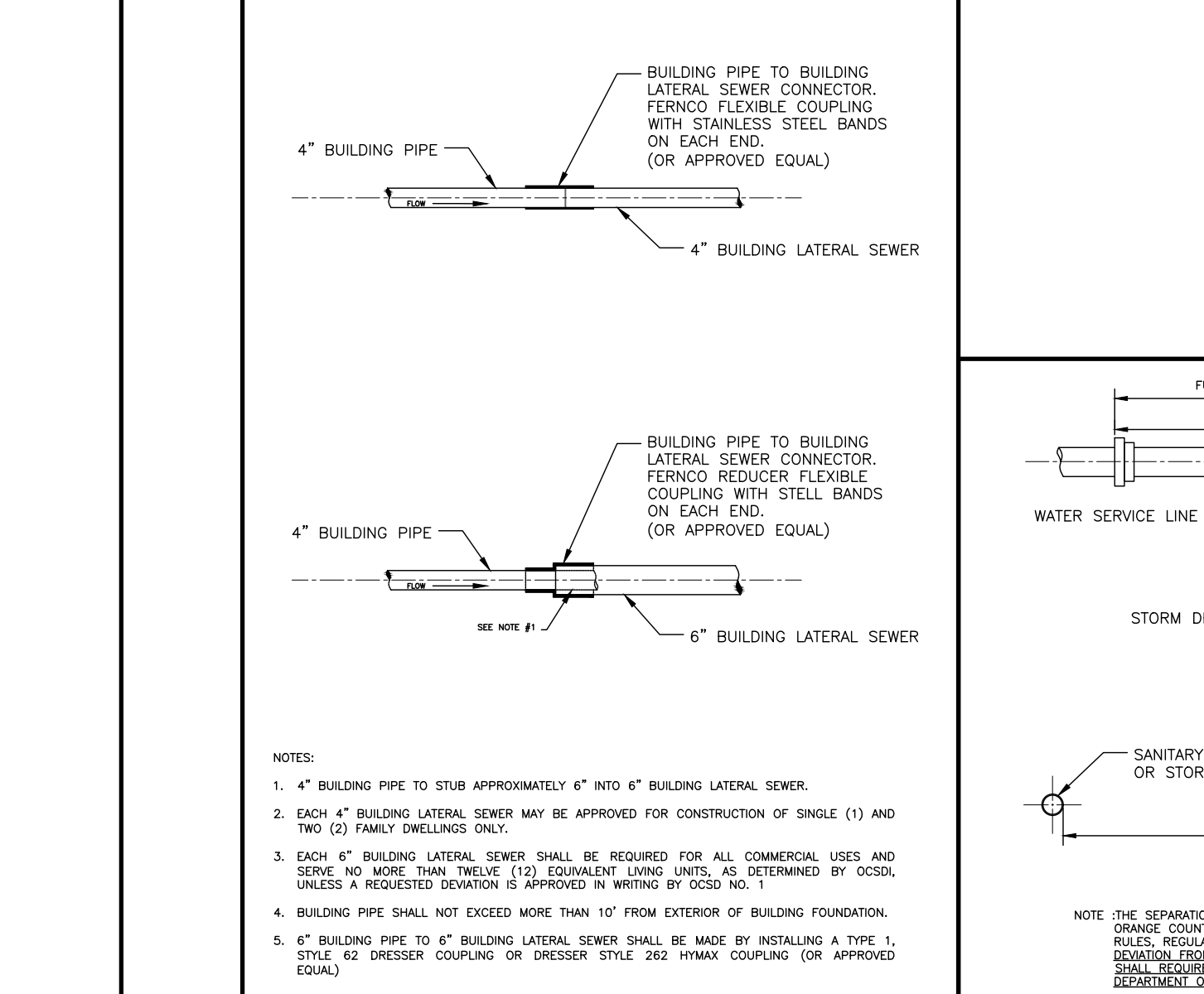
OPTION B: GRADED EARTH



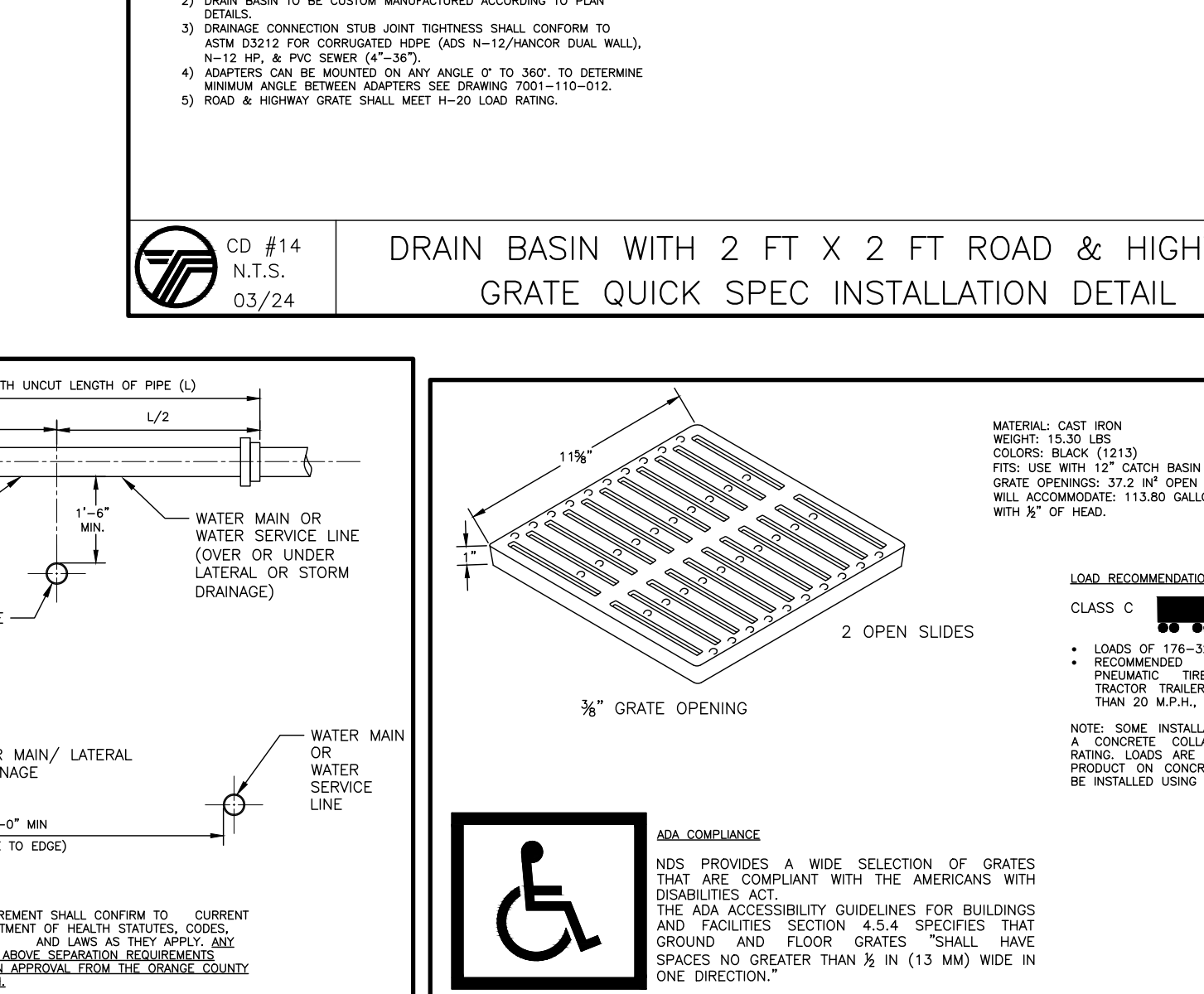
CD #14
N.T.S.
03/24



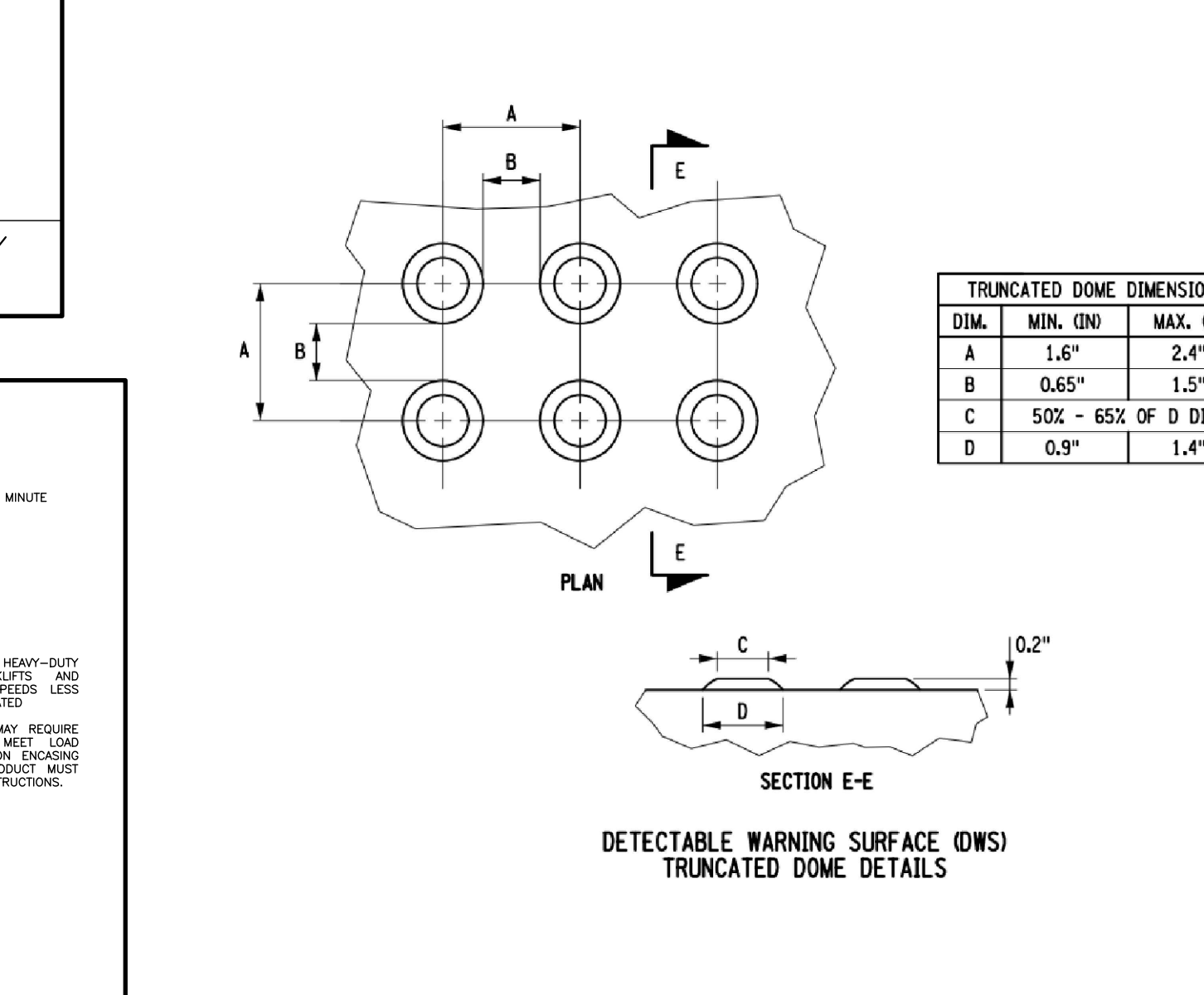
CD #17
N.T.S.
03/24



UT #6
N.T.S.
02/23



UT #5
N.T.S.
02/23



CD #18
N.T.S.
03/24

NO.	REVISION	DATE	DR/CK

JOSIP MEDIC, PE
 379 BROOKFIELD DR.
 JACKSON, NJ 08527
 LIC. 103757
 NY 845-666-0155
 NJ 732-523-2289
 E-MAIL INFO@TERRANVC.COM

DETAIL SHEET

DESIGN BY: TB DRAWN BY: OA CHECKED BY: JM

DRAWING NUMBER: **07 OF 07** SCALE: NTS FILE NO.: 24258 DATE: 11/06/2024



13 PENNSYLVANIA AVE
 13 PENNSYLVANIA AVE, VILLAGE OF SOUTH BLOOMING GROVE
 ORANGE COUNTY, NEW YORK 10950
 SBL 211-4-35