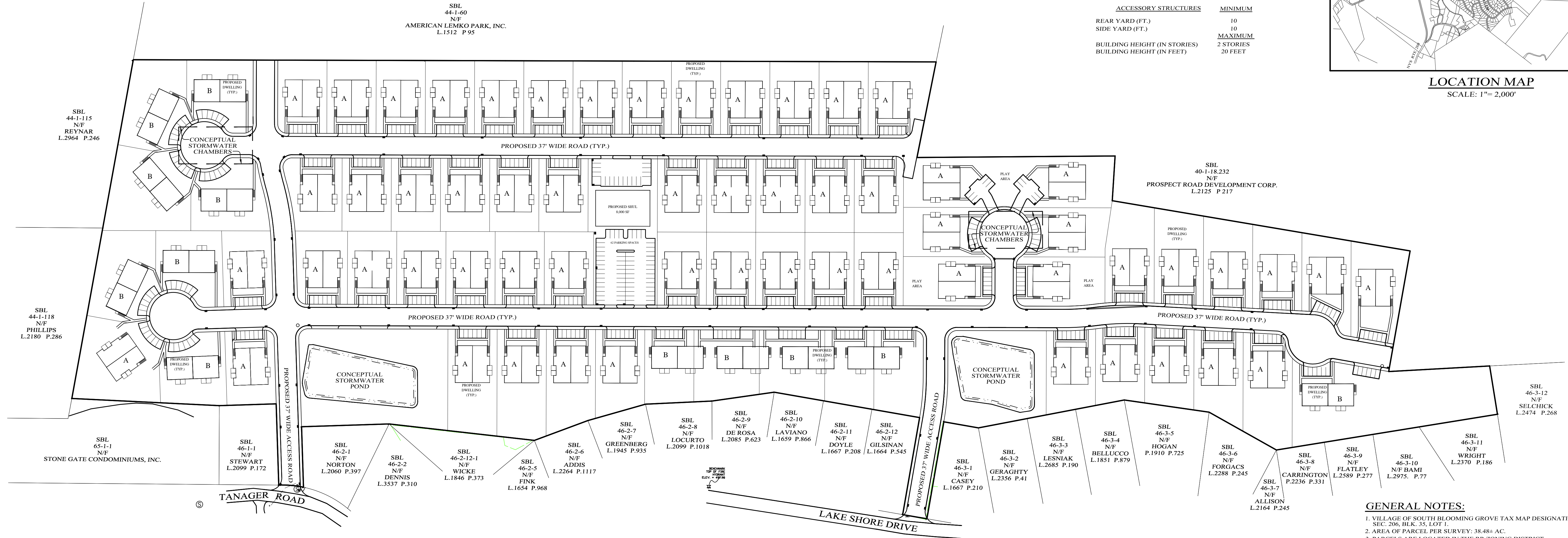


BULK REQUIREMENTS
RR ZONE

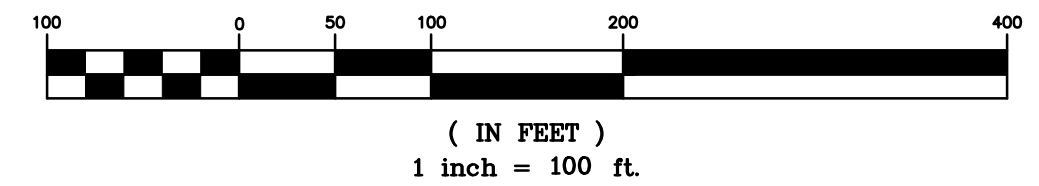
	MINIMUM REQUIRED	MAXIMUM
LOT AREA (S.F.)	10,000	
FRONTAGE (FT.)	60*	
FRONT YARD (FT.)	33**	
REAR YARD (FT.)	40	
SIDE YARD (FT.)	15	
BUILDING COVERAGE (%)		50
*MINIMUM FRONTAGE ON CURVED LOTS SHALL BE MEASURED AT THE FRONT SETBACK LINE		
**MINIMUM FRONT YARD SHALL BE 40 FEET AS MEASURED FROM THE EDGE OF PAVEMENT.		
BUILDING HEIGHT (IN STORIES)	2	
BUILDING HEIGHT (IN FEET)		35
ACCESSORY STRUCTURES		
REAR YARD (FT.)	10	
SIDE YARD (FT.)	10	
BUILDING HEIGHT (IN STORIES)	2 STORIES	
BUILDING HEIGHT (IN FEET)		20 FEET



LOCATION MAP
SCALE: 1"= 2,000'



SITE PLAN
GRAPHIC SCALE



- GENERAL NOTES:**
- VILLAGE OF SOUTH BLOOMING GROVE TAX MAP DESIGNATION: SEC. 206, BLK. 35, LOT 1.
 - AREA OF PARCEL PER SURVEY: 38.48± AC.
 - PARCELS ARE LOCATED IN THE RR ZONING DISTRICT.
 - EXISTING TOPOGRAPHY AND BOUNDARY INFORMATION PROVIDED BY A MAP ENTITLED "OUTBOUND AND TOPOGRAPHIC SURVEY PREPARED FOR 25 LARK DRIVE - SEC. 206 - BLOCK 35 - LOT 1 - AS PREPARED BY: JOHN W. MCCORD, SR. P.L.S. JACKSON, NJ.
 - EXISTING FEATURES AND INFORMATION SHOWN HEREON HAS BEEN COLLECTED FROM VARIOUS SOURCES.
 - ALL NEW UTILITIES SHALL BE CONSTRUCTED UNDERGROUND.

LEGEND

EXISTING PROPERTY LINE	---
EXISTING 5' CONTOUR LINE	----
EXISTING 25' CONTOUR LINE	-----
BUILDING SETBACK LINE	----
EXISTING EDGE OF PAVEMENT	----

SHEET INDEX

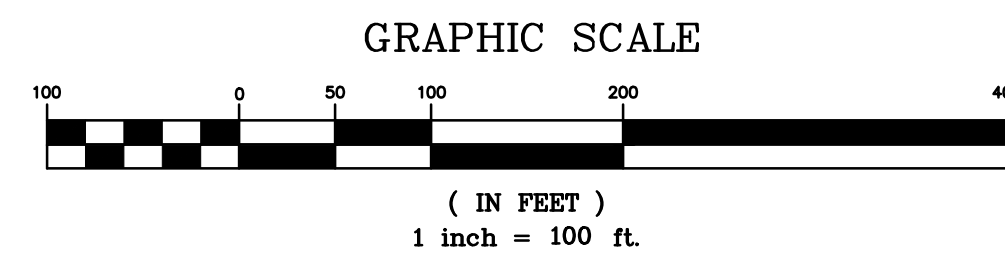
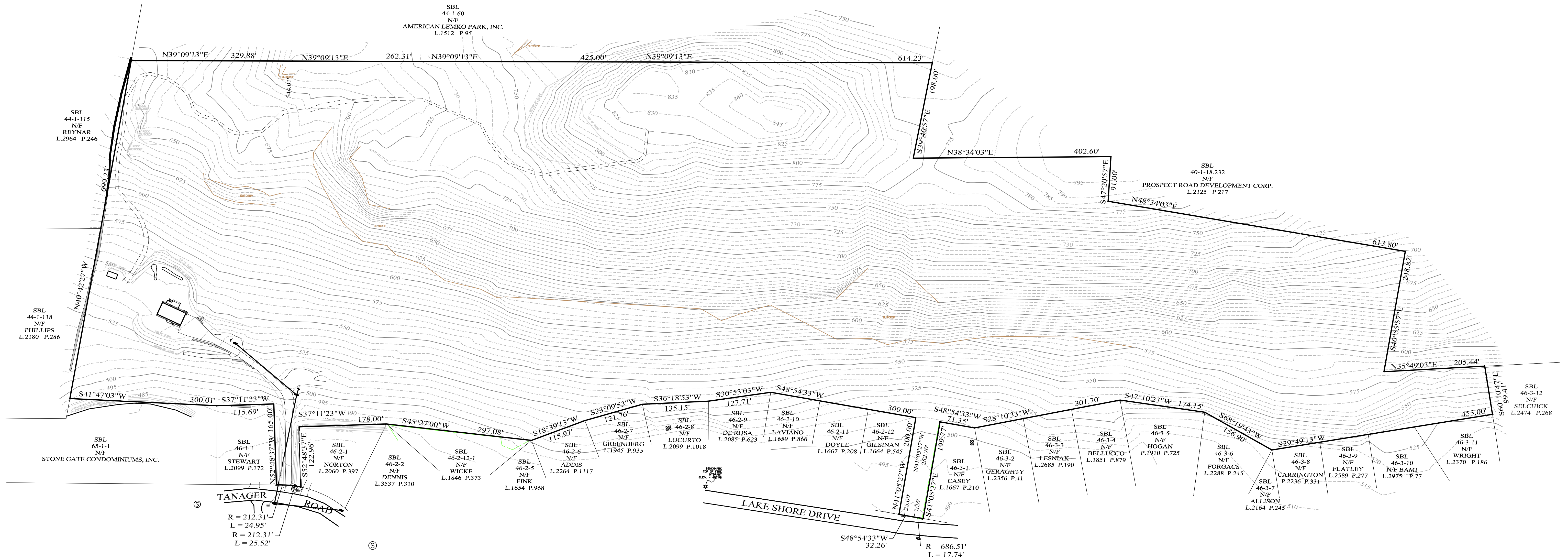
SHEET #1	- SITE PLAN
SHEET #2	- EXISTING CONDITIONS MAP
SHEET #3	- GRADING & UTILITY PLAN
SHEET #4	- GRADING & UTILITY PLAN
SHEET #5	- GRADING & UTILITY PLAN
SHEET #6	- ROAD PROFILES
SHEET #7	- ROAD PROFILES
SHEET #8	- ROAD DETAILS
SHEET #9	- SITE DETAILS
SHEET #10	- STORMWATER DETAILS

11-12-25	ADD CONCEPTUAL DRAINAGE & UTILITIES
09-18-25	ADD CONCEPTUAL STORMWATER CONTROL
08-22-25	INITIAL PREPARATION
DATE	REVISIONS

KIRK ROTHER, P.E.	N.Y.S. LIC. NO. 079053	DATE
D.O.T. SHEET #	D.E.C. SHEET #	O.C.H.D. SHEET #
N.A.	N.A.	N.A.
CAD #	PROJECT #	SCALE
SP1	LARK	AS SHOWN

KIRK ROTHER, P.E.
CONSULTING ENGINEER, PLLC
5 Saint Stephens Lane, Warwick, NY 10990
(845) 988-0620

1 OF 10



LEGEND

EXISTING PROPERTY LINE	—————
EXISTING 5' CONTOUR LINE	—————
EXISTING 25' CONTOUR LINE	—————
BUILDING SETBACK LINE	—————
EXISTING EDGE OF PAVEMENT	—————

LARK SUBDIVISION

VILLAGE OF BLOOMING GROVE, ORANGE COUNTY, NEW YORK

PROJECT TITLE

EXISTING CONDITIONS MAP

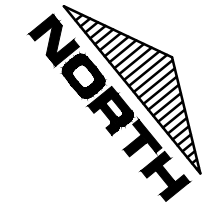
DRAWING TITLE

KIRK ROTHER, P.E.
CONSULTING ENGINEER, PLLC
5 Saint Stephens Lane, Warwick, NY 10990
(845) 988-0620

DATE	REVISIONS	DATE
08-22-25	INITIAL PREPARATION	

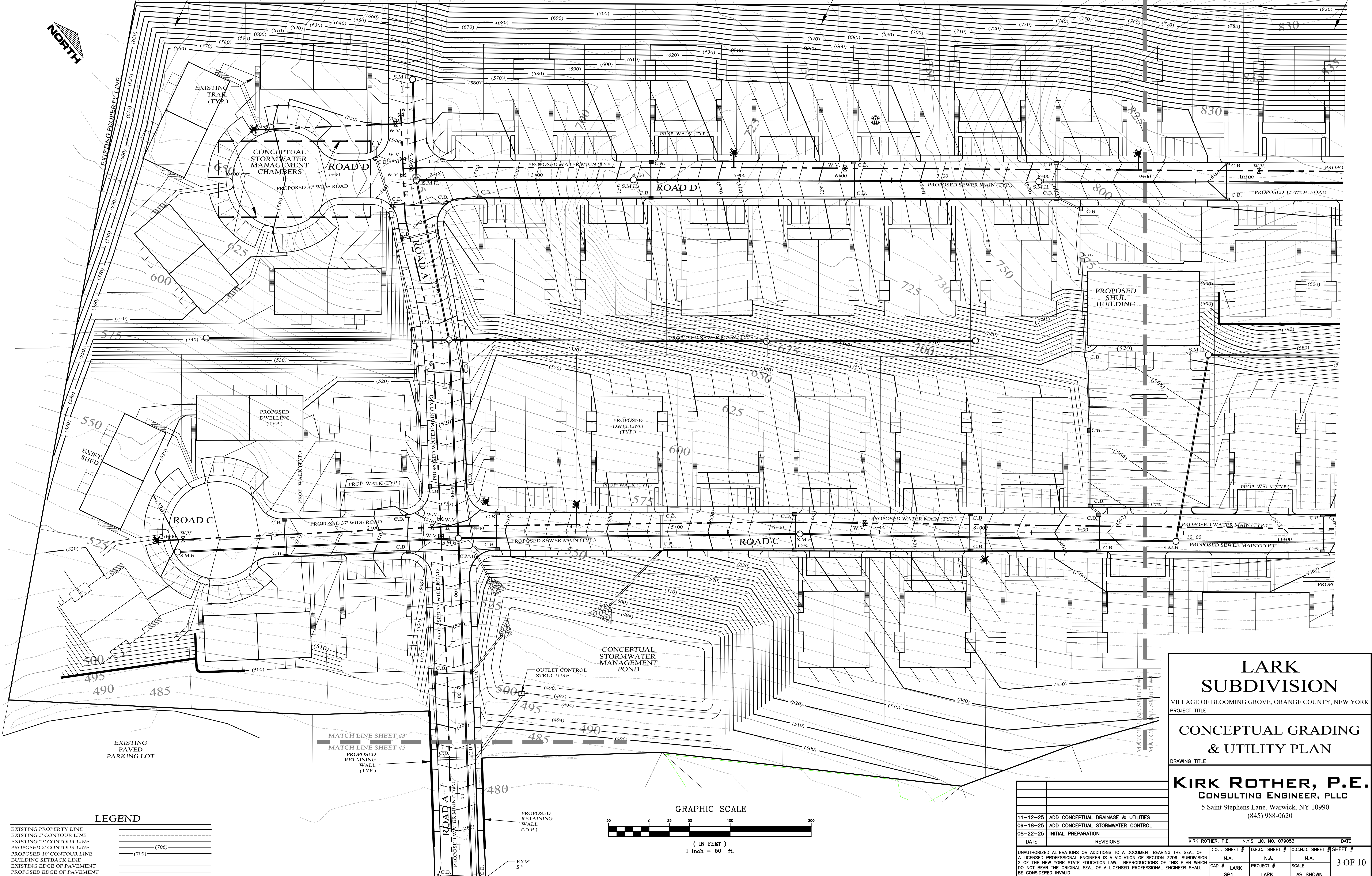
D.O.T. SHEET #	D.E.C. SHEET #	O.C.H.D. SHEET #	SHEET #
N.A.	N.A.	N.A.	2 OF 10
CAD #	PROJECT #	SCALE	
SP1	LARK SKETCH	AS SHOWN	

UNAUTHORIZED ALTERATIONS OR ADDITIONS TO A DOCUMENT BEARING THE SEAL OF A LICENSED PROFESSIONAL ENGINEER IS A VIOLATION OF SECTION 7209, SUBDIVISION 2 OF THE NEW YORK STATE EDUCATION LAW. REPRODUCTIONS OF THIS PLAN WHICH DO NOT BEAR THE ORIGINAL SEAL OF A LICENSED PROFESSIONAL ENGINEER SHALL BE CONSIDERED INVALID.



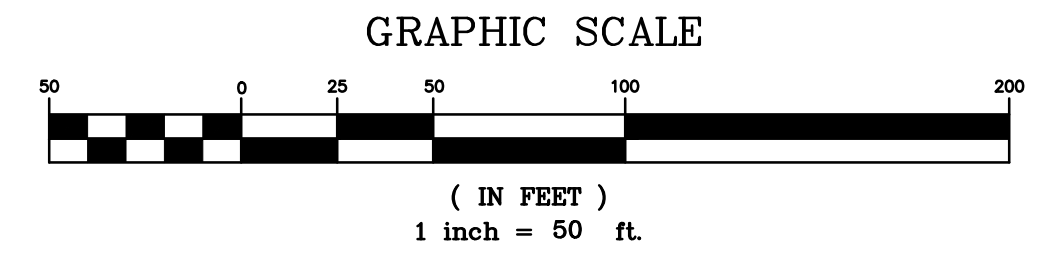
ZV: 1H ROCK CUT
HOUSES IN THIS SECTION TO BE PHASE 2

ZV: 1H ROCK CUT
HOUSES IN THIS SECTION TO BE PHASE 2



LEGEND

EXISTING PROPERTY LINE	---
EXISTING 5' CONTOUR LINE	---(500)---
EXISTING 25' CONTOUR LINE	---(700)---
PROPOSED 2' CONTOUR LINE	---(700)---
PROPOSED 10' CONTOUR LINE	---(700)---
BUILDING SETBACK LINE	---
EXISTING EDGE OF PAVEMENT	---
PROPOSED EDGE OF PAVEMENT	---



LARK SUBDIVISION
VILLAGE OF BLOOMING GROVE, ORANGE COUNTY, NEW YORK
PROJECT TITLE

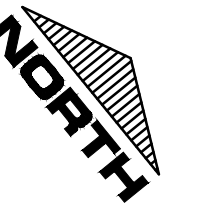
CONCEPTUAL GRADING & UTILITY PLAN
DRAWING TITLE

KIRK ROTHER, P.E.
CONSULTING ENGINEER, PLLC
5 Saint Stephens Lane, Warwick, NY 10990
(845) 988-0620

DATE	REVISIONS	KIRK ROTHER, P.E. N.Y.S. LIC. NO. 079053	DATE
11-12-25	ADD CONCEPTUAL DRAINAGE & UTILITIES		
09-18-25	ADD CONCEPTUAL STORMWATER CONTROL		
08-22-25	INITIAL PREPARATION		

D.O.T. SHEET #	D.E.C. SHEET #	O.C.H.D. SHEET #	SHEET #
N.A.	N.A.	N.A.	3 OF 10
CAD # LARK SP1	PROJECT # LARK	SCALE AS SHOWN	

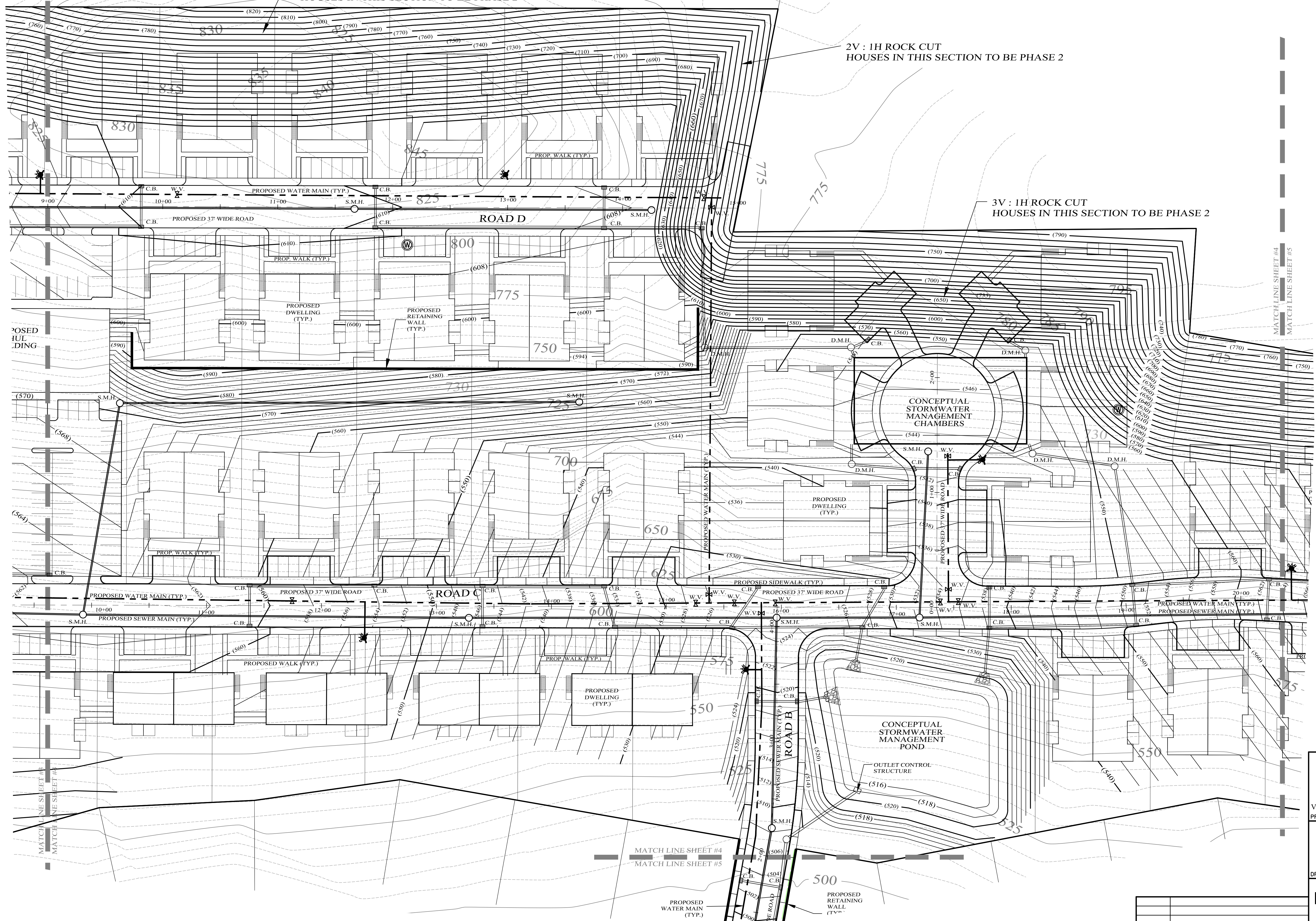
UNAUTHORIZED ALTERATIONS OR ADDITIONS TO A DOCUMENT BEARING THE SEAL OF A LICENSED PROFESSIONAL ENGINEER IS A VIOLATION OF SECTION 7209, SUBDIVISION 2 OF THE NEW YORK STATE EDUCATION LAW. REPRODUCTIONS OF THIS PLAN WHICH DO NOT BEAR THE ORIGINAL SEAL OF A LICENSED PROFESSIONAL ENGINEER SHALL BE CONSIDERED INVALID.



HOUSES IN THIS SECTION TO BE PHASE 2

2V : 1H ROCK CUT
HOUSES IN THIS SECTION TO BE PHASE 2

3V : 1H ROCK CUT
HOUSES IN THIS SECTION TO BE PHASE 2



MATCH LINE SHEET #4
MATCH LINE SHEET #5

PROPOSED
D.WELLING

CONCEPTUAL
STORMWATER
MANAGEMENT
CHAMBERS

PROPOSED
D.WELLING
(TYP.)

CONCEPTUAL
STORMWATER
MANAGEMENT
POND

OUTLET CONTROL
STRUCTURE

MATCH LINE SHEET #4
MATCH LINE SHEET #5

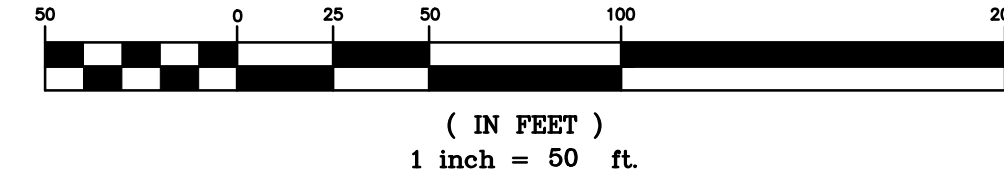
PROPOSED
WATER MAIN
(TYP.)

PROPOSED
RETAINING
WALL
(TYP.)

LEGEND

EXISTING PROPERTY LINE	---
EXISTING 5' CONTOUR LINE	---
EXISTING 25' CONTOUR LINE	---
PROPOSED 2' CONTOUR LINE	---
PROPOSED 10' CONTOUR LINE	---
BUILDING SETBACK LINE	---
EXISTING EDGE OF PAVEMENT	---
PROPOSED EDGE OF PAVEMENT	---

GRAPHIC SCALE



LARK SUBDIVISION
VILLAGE OF BLOOMING GROVE, ORANGE COUNTY, NEW YORK
PROJECT TITLE

CONCEPTUAL GRADING & UTILITY PLAN
DRAWING TITLE

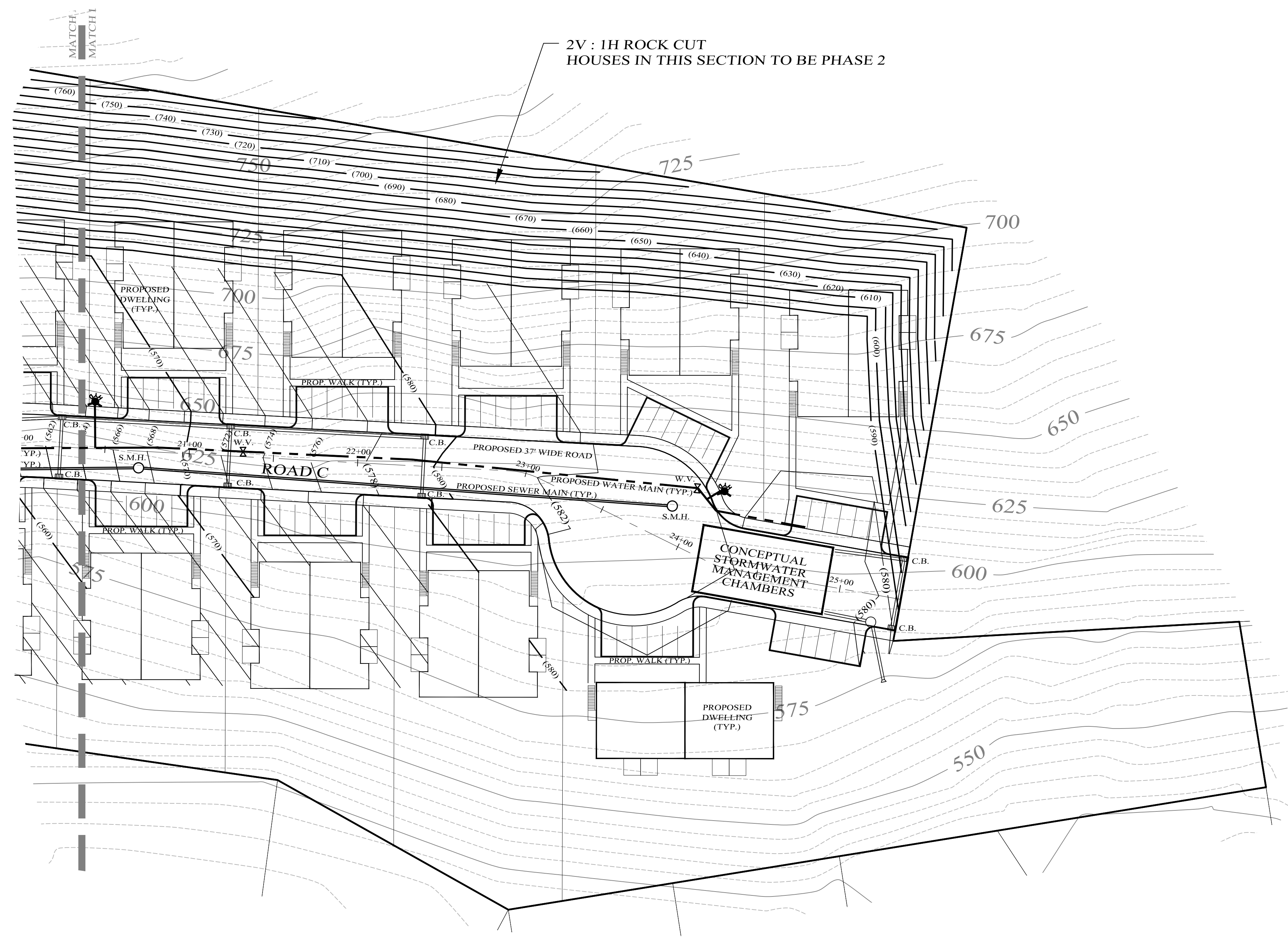
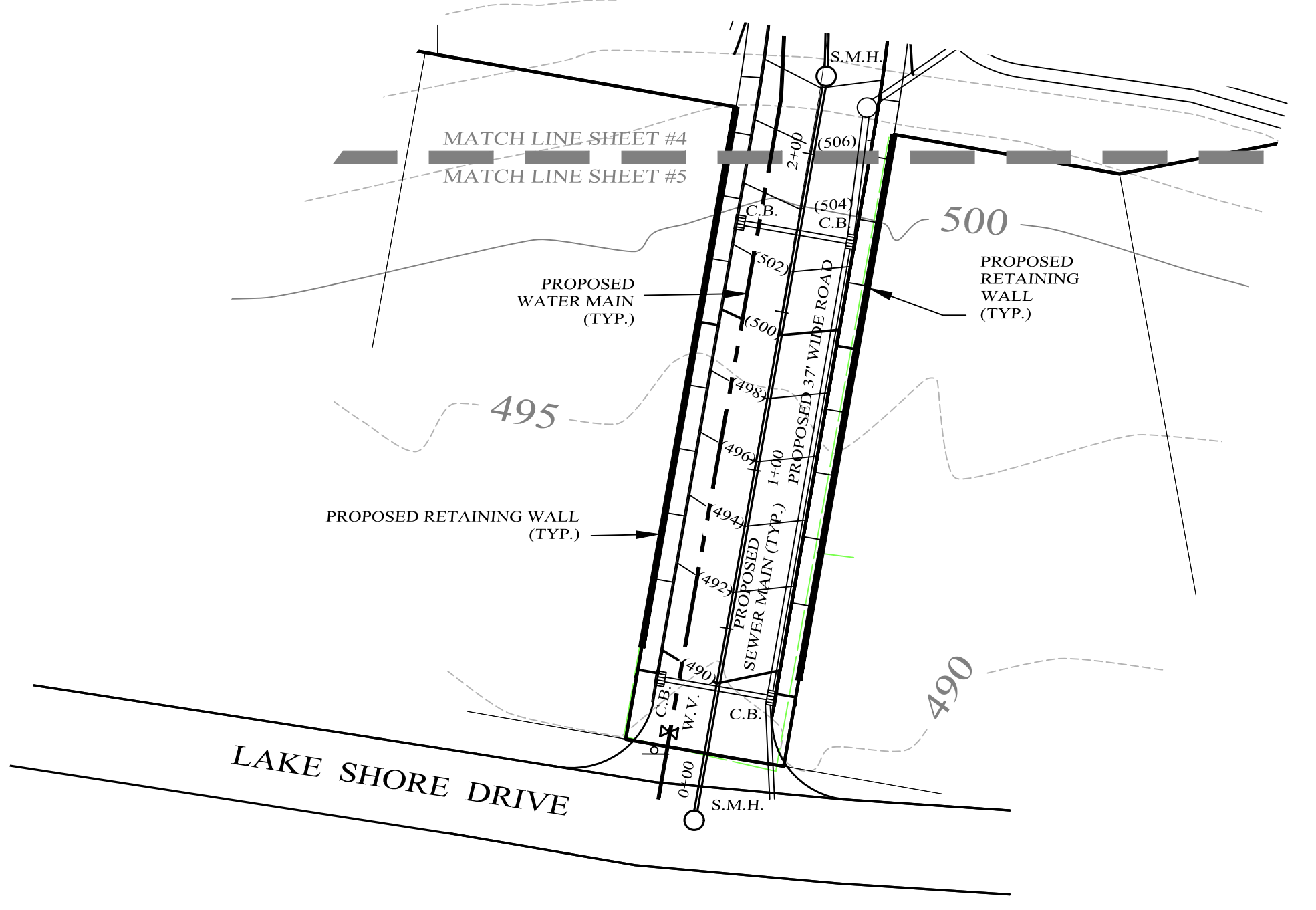
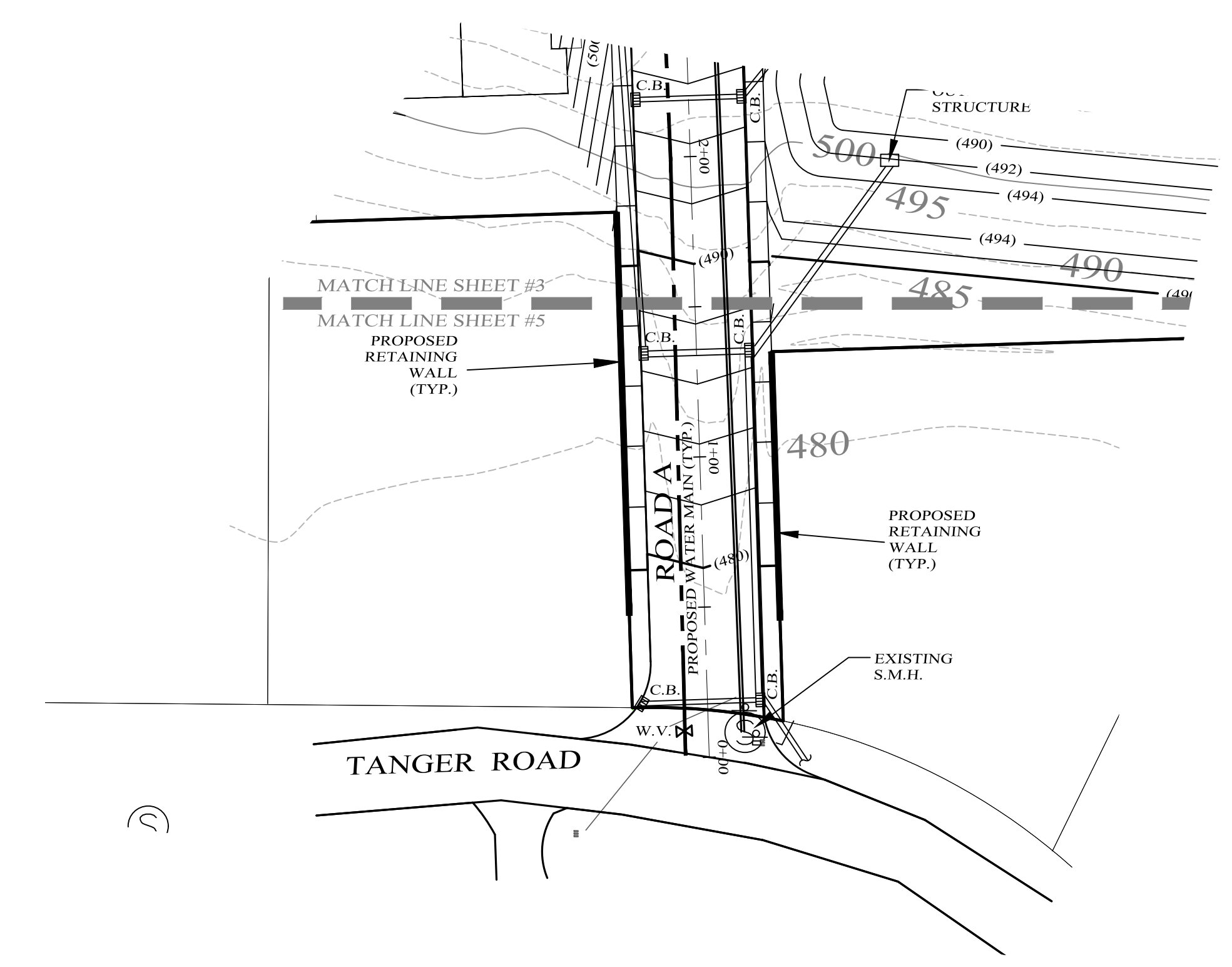
KIRK ROTHER, P.E.
CONSULTING ENGINEER, PLLC
5 Saint Stephens Lane, Warwick, NY 10990
(845) 988-0620

11-12-25	ADD CONCEPTUAL DRAINAGE & UTILITIES
09-18-25	ADD CONCEPTUAL STORMWATER CONTROL
08-22-25	INITIAL PREPARATION

DATE	REVISIONS	KIRK ROTHER, P.E.	N.Y.S. LIC. NO. 079053	DATE

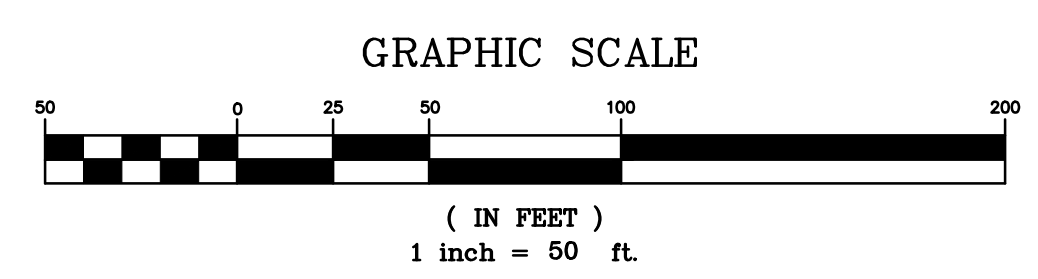
D.O.T. SHEET #	D.E.C. SHEET #	O.C.H.D. SHEET #	SHEET #
N.A.	N.A.	N.A.	4 OF 10
CAD #	PROJECT #	SCALE	
SP1	LARK	AS SHOWN	

UNAUTHORIZED ALTERATIONS OR ADDITIONS TO A DOCUMENT BEARING THE SEAL OF A LICENSED PROFESSIONAL ENGINEER IS A VIOLATION OF SECTION 7209, SUBDIVISION 2 OF THE NEW YORK STATE EDUCATION LAW. REPRODUCTIONS OF THIS PLAN WHICH DO NOT BEAR THE ORIGINAL SEAL OF A LICENSED PROFESSIONAL ENGINEER SHALL BE CONSIDERED INVALID.



LEGEND

EXISTING PROPERTY LINE	---
EXISTING 5' CONTOUR LINE	-----
EXISTING 25' CONTOUR LINE	-----
PROPOSED 2' CONTOUR LINE	----- (706)
PROPOSED 10' CONTOUR LINE	----- (700)
BUILDING SETBACK LINE	---
EXISTING EDGE OF PAVEMENT	---
PROPOSED EDGE OF PAVEMENT	---



DATE	REVISIONS
11-12-25	ADD CONCEPTUAL DRAINAGE & UTILITIES
09-18-25	ADD CONCEPTUAL STORMWATER CONTROL
08-22-25	INITIAL PREPARATION

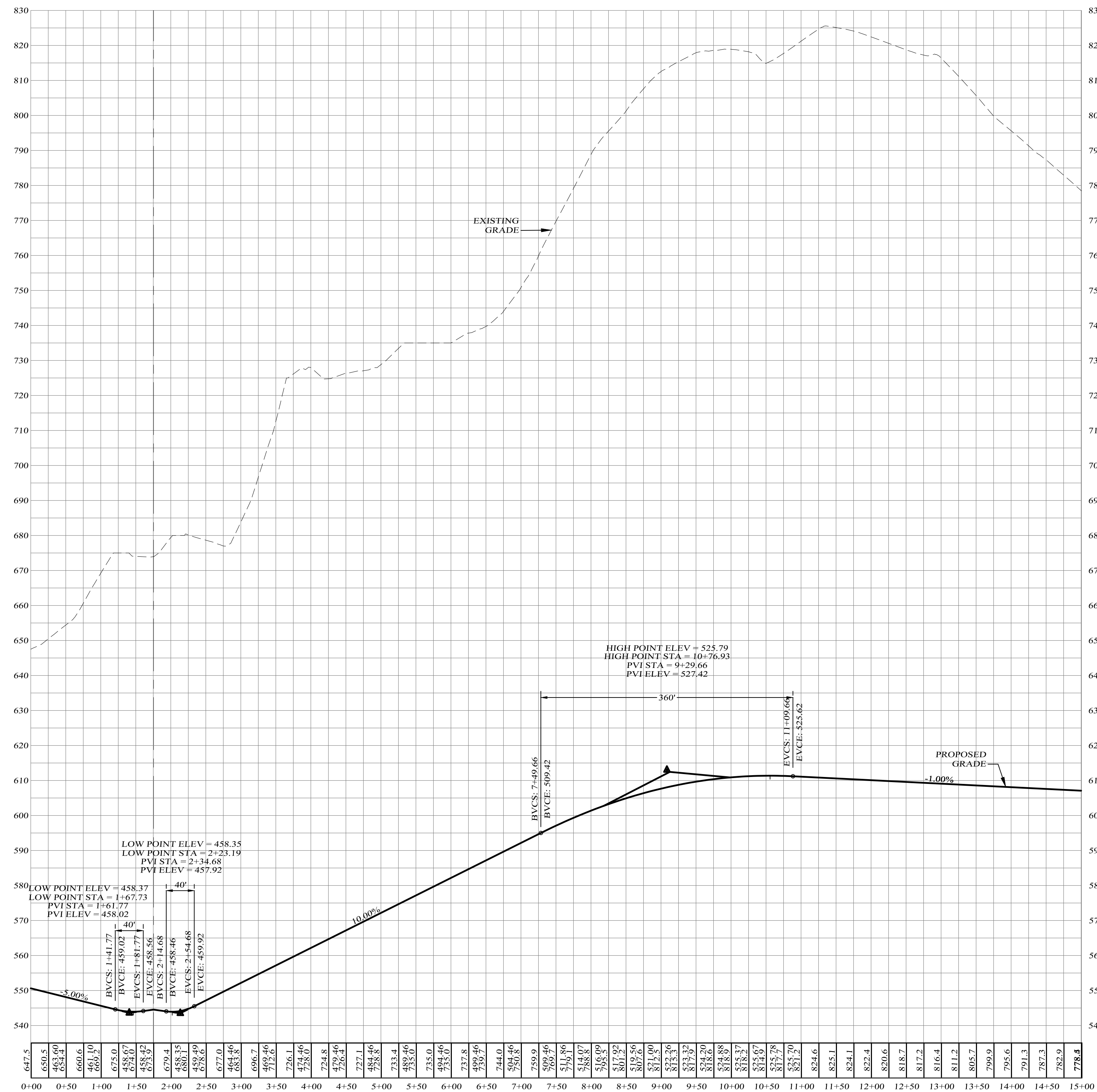
LARK SUBDIVISION
VILLAGE OF BLOOMING GROVE, ORANGE COUNTY, NEW YORK
PROJECT TITLE

CONCEPTUAL GRADING & UTILITY PLAN
DRAWING TITLE

KIRK ROTHER, P.E.
CONSULTING ENGINEER, PLLC
5 Saint Stephens Lane, Warwick, NY 10990
(845) 988-0620

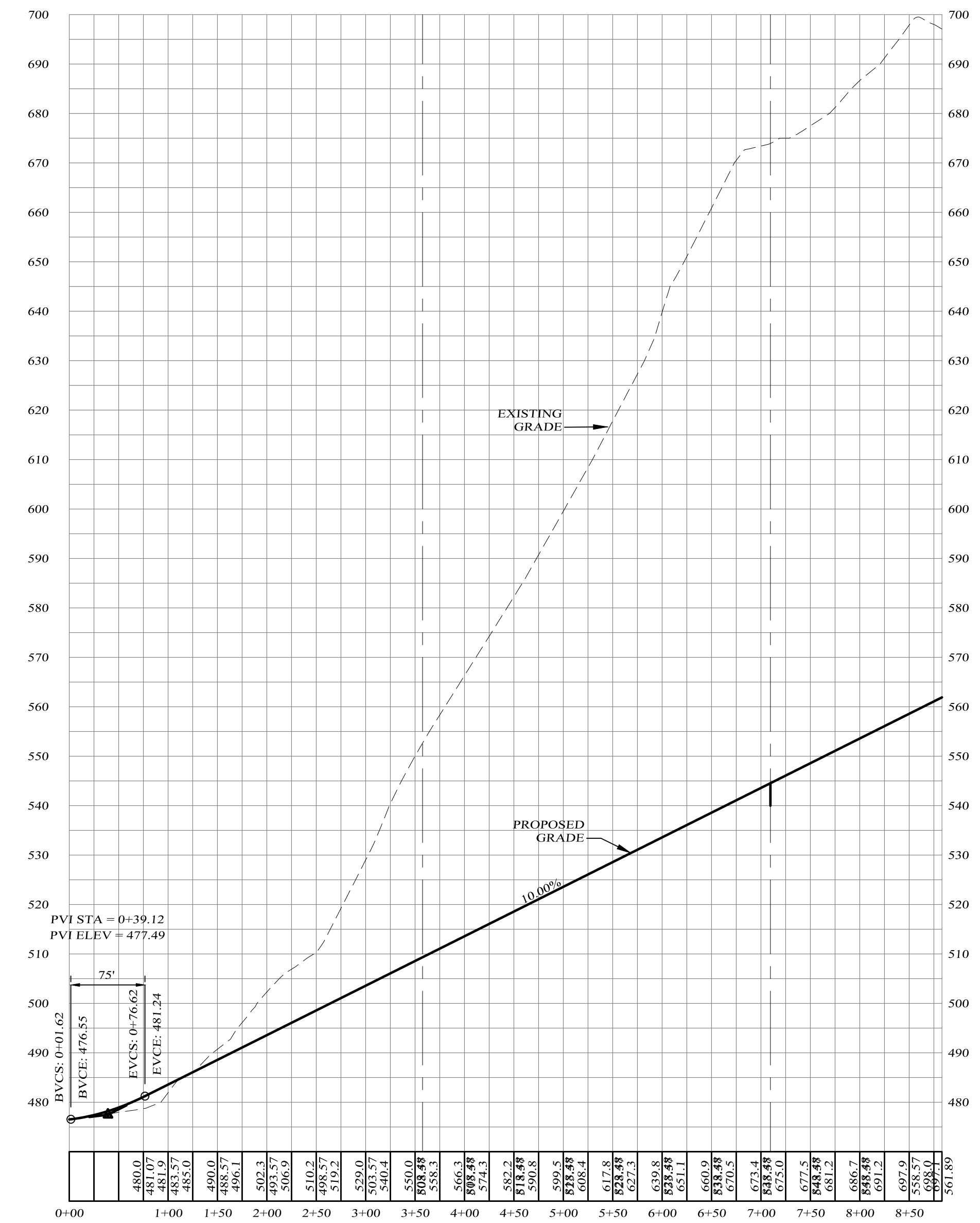
D.O.T. SHEET #	D.E.C. SHEET #	O.C.H.D. SHEET #	SHEET #
N.A.	N.A.	N.A.	5 OF 10
CAD #	PROJECT #	SCALE	
SP1	LARK	AS SHOWN	

KIRK ROTHER, P.E. N.Y.S. LIC. NO. 079053 DATE



ROAD D PROFILE

SCALES:
HOR: 1" = 100'
VER: 1" = 20'



ROAD A PROFILE

SCALES:
HOR: 1" = 100'
VER: 1" = 20'

LARK SUBDIVISION
VILLAGE OF BLOOMING GROVE, ORANGE COUNTY, NEW YORK
PROJECT TITLE

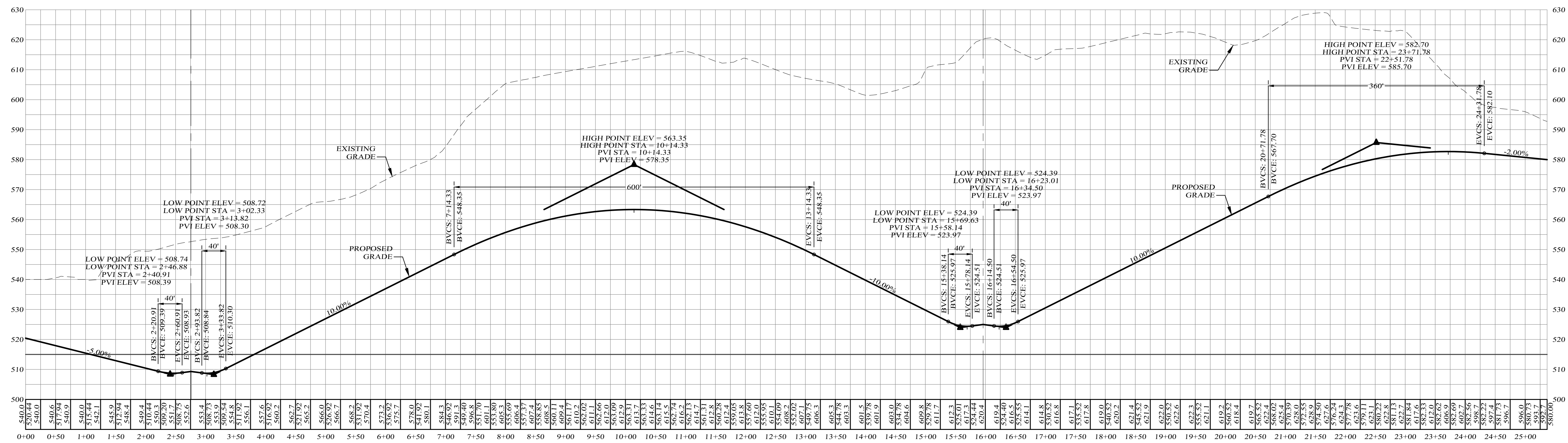
ROAD PROFILES
DRAWING TITLE

KIRK ROTHER, P.E.
CONSULTING ENGINEER, PLLC
5 Saint Stephens Lane, Warwick, NY 10990
(845) 988-0620

DATE	REVISIONS	KIRK ROTHER, P.E.	N.Y.S. LIC. NO. 079053
08-22-25	INITIAL PREPARATION		

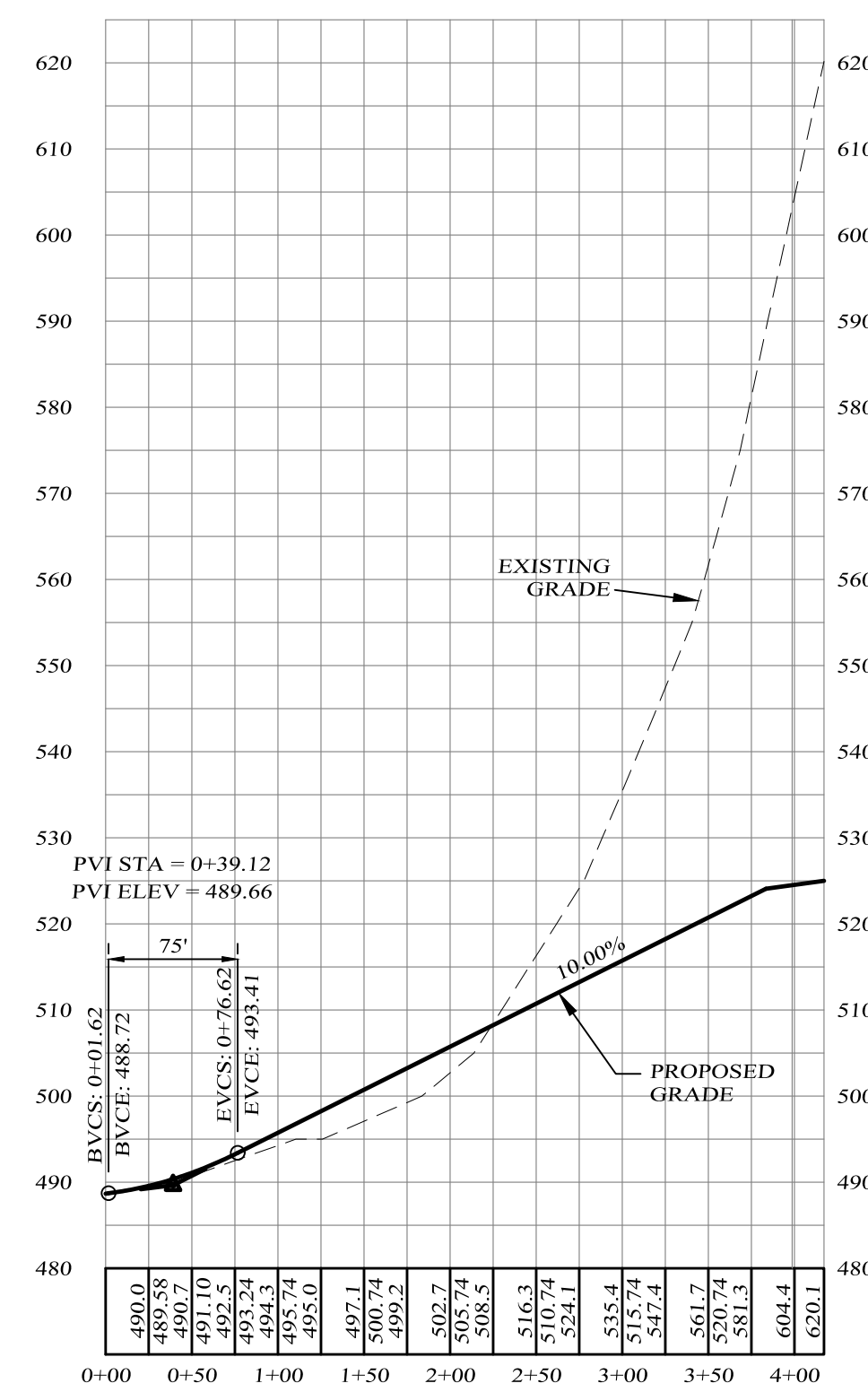
D.O.T. SHEET #	D.E.C. SHEET #	O.C.H.D. SHEET #	SHEET #
N.A.	N.A.	N.A.	6 OF 10
CAD #	PROJECT #	SCALE	
SP1	LARK	AS SHOWN	

UNAUTHORIZED ALTERATIONS OR ADDITIONS TO A DOCUMENT BEARING THE SEAL OF A LICENSED PROFESSIONAL ENGINEER IS A VIOLATION OF SECTION 7209, SUBDIVISION 2 OF THE NEW YORK STATE EDUCATION LAW. REPRODUCTIONS OF THIS PLAN WHICH DO NOT BEAR THE ORIGINAL SEAL OF A LICENSED PROFESSIONAL ENGINEER SHALL BE CONSIDERED INVALID.



ROAD C PROFILE

SCALES:
HOR: 1" = 100'
VER: 1" = 20'



ROAD B PROFILE

SCALES:
HOR: 1" = 100'
VER: 1" = 20'

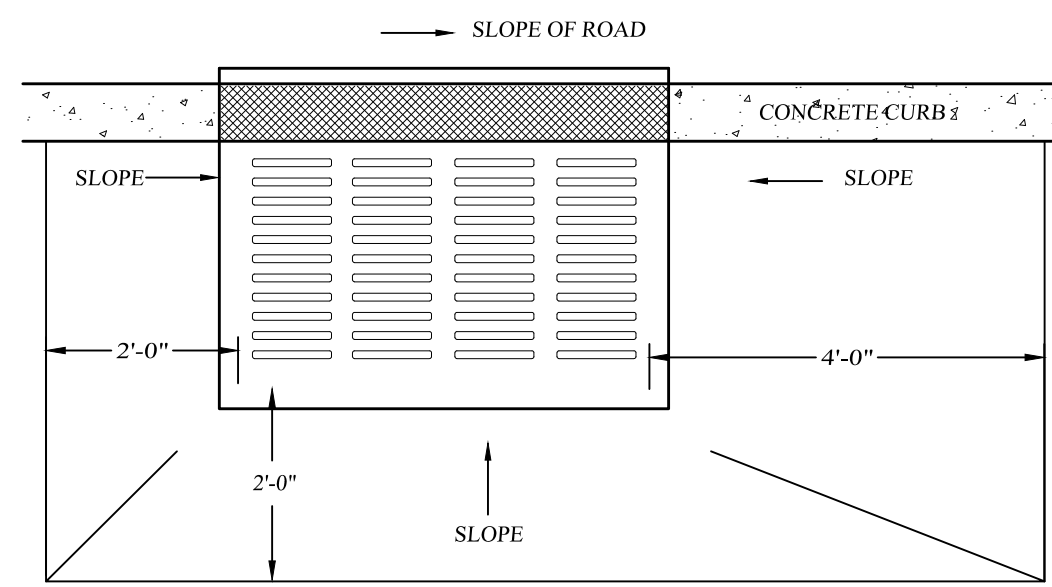
**LARK
SUBDIVISION**
VILLAGE OF BLOOMING GROVE, ORANGE COUNTY, NEW YORK
PROJECT TITLE

ROAD PROFILES
DRAWING TITLE

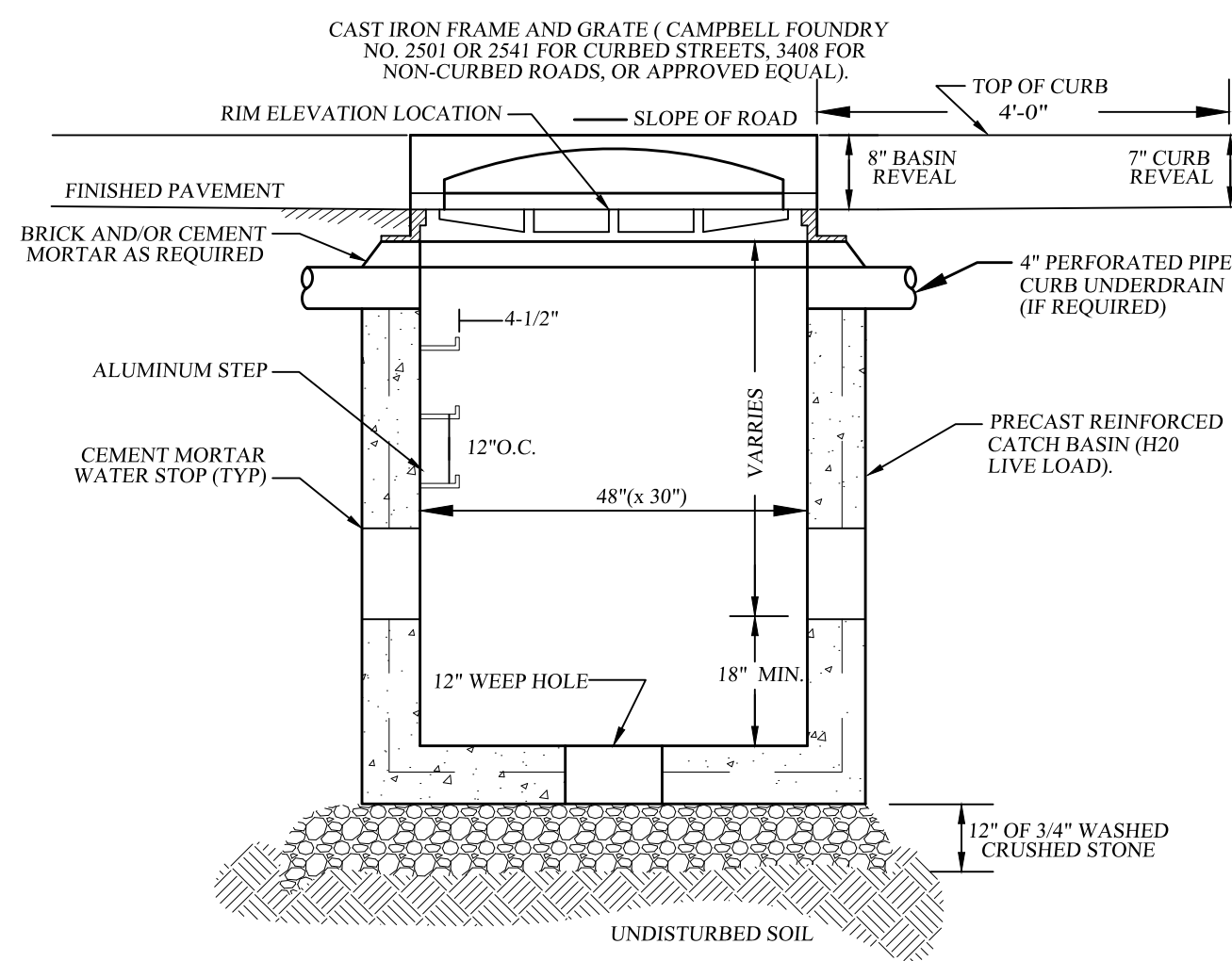
KIRK ROTHER, P.E.
CONSULTING ENGINEER, PLLC
5 Saint Stephens Lane, Warwick, NY 10990
(845) 988-0620

DATE	REVISIONS	DATE
08-22-25	INITIAL PREPARATION	

D.O.T. SHEET #	D.E.C. SHEET #	O.C.H.D. SHEET #	SHEET #
N.A.	N.A.	N.A.	7 OF 10
CAD # LARK	PROJECT #	SCALE	
SP1	LARK	AS SHOWN	



PLAN

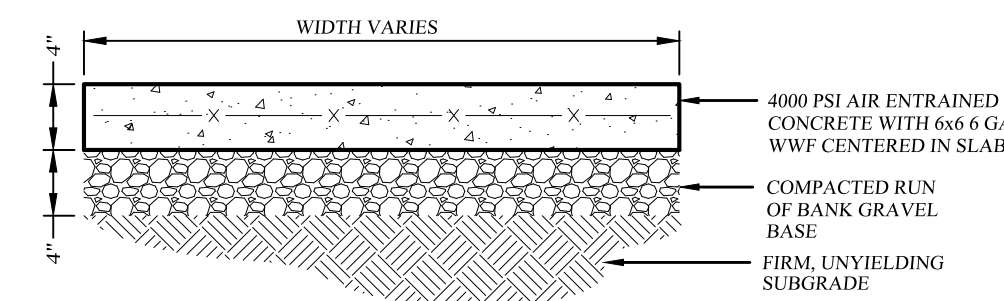


FRONT ELEVATION

- NOTES:
1. BACKFILL AROUND CATCH BASIN TO BE COMPACTED IN MAX. 8" LIFTS.
 2. THE ENDS OF ALL PIPES SHALL BE CUT OFF FLUSH WITH THE INSIDE SURFACE OF CATCH BASIN AND ADEQUATELY MORTARED.
 3. PRECAST CONCRETE TO BE 4000 PSI @ 28 DAYS

PRECAST CONCRETE CURB INLET DETAIL

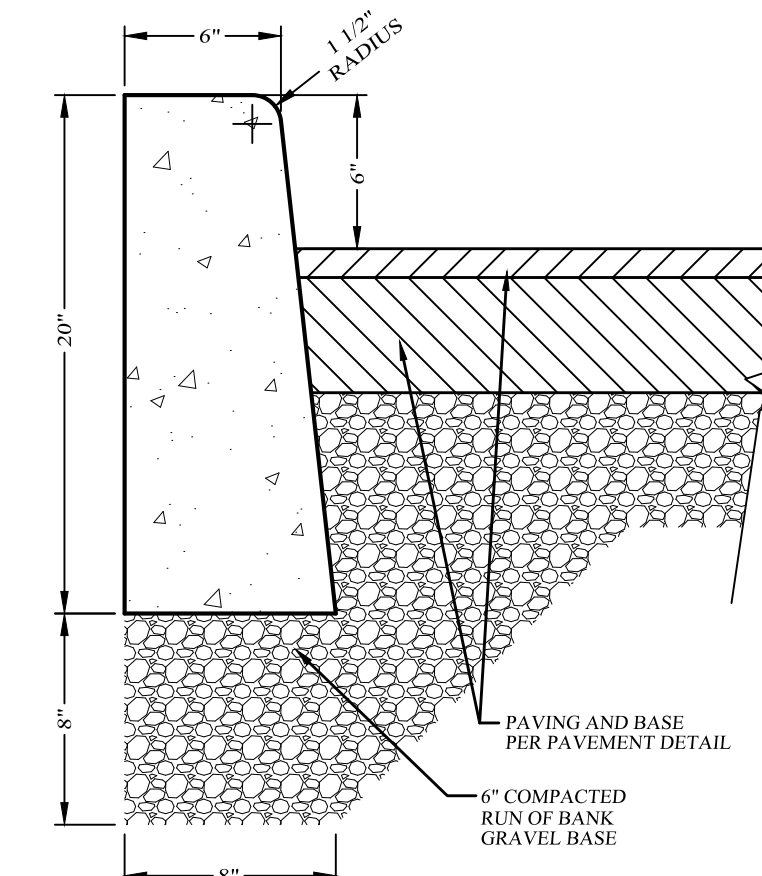
NOT TO SCALE



- NOTES:
1. SIDEWALKS SHALL BE CAST IN PLACE CONCRETE WITH 1" DEEP JOINTS INSTALLED AT SPACING EQUAL TO THE SIDEWALK WIDTH.
 2. CELLULOSE, OR EQUIVALENT, EXPANSION JOINTS SHALL BE INSTALLED 20 FOOT ON CENTER. IF THE SIDEWALK IS POURED AGAINST CONCRETE CURBS, BUILDINGS OR OTHER STRUCTURES, AN EXPANSION JOINT SHALL BE INSTALLED ALONG THE ENTIRE LENGTH OF CONTACT. SIDEWALKS SHALL SLOPE AWAY FROM BUILDINGS TO PROVIDE POSITIVE DRAINAGE AND CONFORM TO THE LATEST REVISION OF ALL APPLICABLE REGULATORY STANDARDS INCLUDING THE AMERICANS WITH DISABILITIES ACT.
 3. MIX DESIGN SHALL BE IN ACCORDANCE WITH AMERICAN CONCRETE INSTITUTE GUIDELINES FOR CONCRETE EXPOSED TO FREEZING, THAWING AND DE-ICING CHEMICALS. CONCRETE SHALL HAVE A WATER-CEMENTITIOUS RATIO OF 0.45 AND AIR ENTRAINMENT OF 4 1/2% FOR A 1" NOMINAL AGGREGATE SIZE. CONCRETE TO TEST 4000 PSI AT 28 DAYS.
 4. SIDEWALK SURFACE TO BE A BROOM FINISH WITH GROOVES RUNNING PERPENDICULAR TO THE LENGTH OF SIDEWALK.

CONCRETE SIDEWALK DETAIL

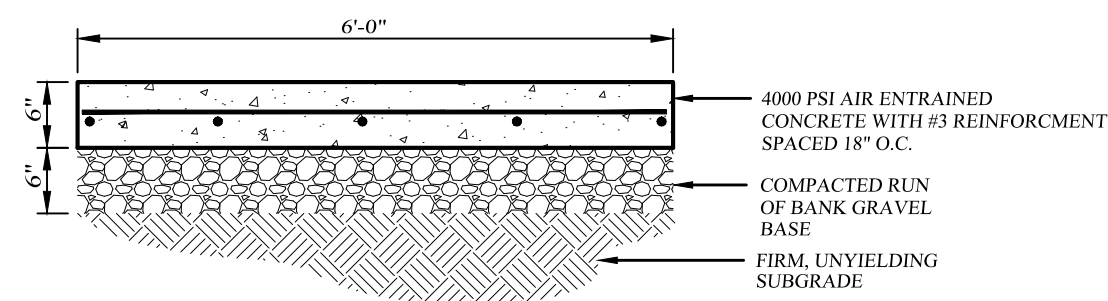
NOT TO SCALE



- NOTES:
1. CURB SHALL BE CAST IN PLACE CONCRETE WITH CELLULOSE, OR EQUIVALENT, EXPANSION JOINTS INSTALLED AT TEN (10) FOOT INTERVALS.
 2. MIX DESIGN SHALL BE IN ACCORDANCE WITH AMERICAN CONCRETE INSTITUTE GUIDELINES FOR CONCRETE EXPOSED TO FREEZING, THAWING AND DE-ICING CHEMICALS. CONCRETE SHALL HAVE A WATER-CEMENTITIOUS RATIO OF 0.45 AND AIR ENTRAINMENT OF 4 1/2% FOR A 1" NOMINAL AGGREGATE SIZE. CONCRETE TO TEST 4000 PSI AT 28 DAYS.

CONCRETE CURB DETAIL (WITHIN SITE)

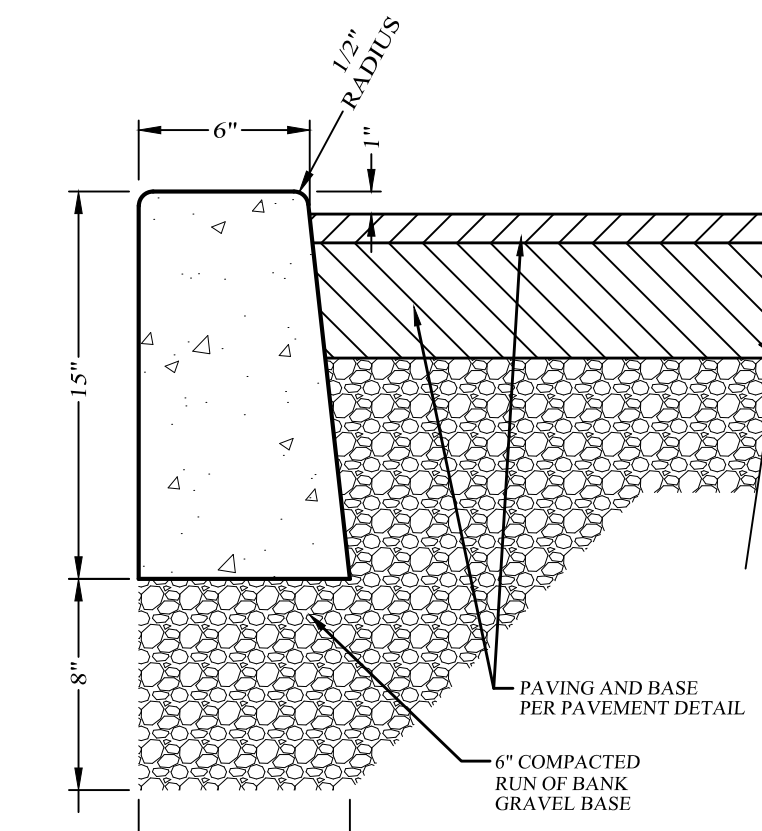
NOT TO SCALE



- NOTES:
1. SIDEWALKS SHALL BE CAST IN PLACE CONCRETE WITH 1" DEEP JOINTS INSTALLED AT SPACING EQUAL TO THE SIDEWALK WIDTH.
 2. CELLULOSE, OR EQUIVALENT, EXPANSION JOINTS SHALL BE INSTALLED 20 FOOT ON CENTER. IF THE SIDEWALK IS POURED AGAINST CONCRETE CURBS, BUILDINGS OR OTHER STRUCTURES, AN EXPANSION JOINT SHALL BE INSTALLED ALONG THE ENTIRE LENGTH OF CONTACT. SIDEWALKS SHALL SLOPE AWAY FROM BUILDINGS TO PROVIDE POSITIVE DRAINAGE AND CONFORM TO THE LATEST REVISION OF ALL APPLICABLE REGULATORY STANDARDS INCLUDING THE AMERICANS WITH DISABILITIES ACT.
 3. MIX DESIGN SHALL BE IN ACCORDANCE WITH AMERICAN CONCRETE INSTITUTE GUIDELINES FOR CONCRETE EXPOSED TO FREEZING, THAWING AND DE-ICING CHEMICALS. CONCRETE SHALL HAVE A WATER-CEMENTITIOUS RATIO OF 0.45 AND AIR ENTRAINMENT OF 4 1/2% FOR A 1" NOMINAL AGGREGATE SIZE. CONCRETE TO TEST 4000 PSI AT 28 DAYS.
 4. SIDEWALK SURFACE TO BE A BROOM FINISH WITH GROOVES RUNNING PERPENDICULAR TO THE LENGTH OF SIDEWALK.

CONCRETE SIDEWALK AT PARKING LOT ENTRANCE DETAIL

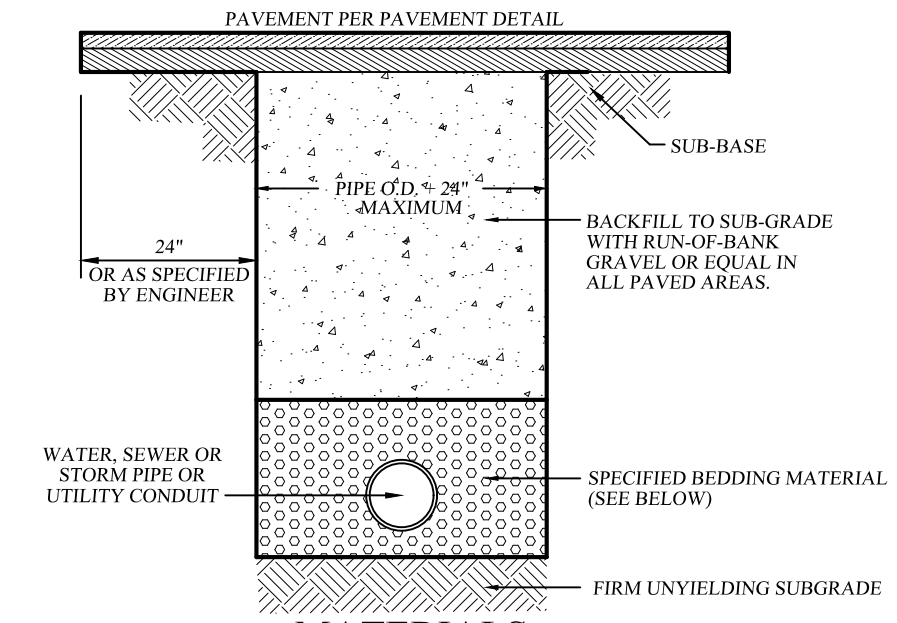
NOT TO SCALE



- NOTES:
1. CURB SHALL BE CAST IN PLACE CONCRETE WITH CELLULOSE, OR EQUIVALENT, EXPANSION JOINTS INSTALLED AT TEN (10) FOOT INTERVALS.
 2. MIX DESIGN SHALL BE IN ACCORDANCE WITH AMERICAN CONCRETE INSTITUTE GUIDELINES FOR CONCRETE EXPOSED TO FREEZING, THAWING AND DE-ICING CHEMICALS. CONCRETE SHALL HAVE A WATER-CEMENTITIOUS RATIO OF 0.45 AND AIR ENTRAINMENT OF 4 1/2% FOR A 1" NOMINAL AGGREGATE SIZE. CONCRETE TO TEST 4000 PSI AT 28 DAYS.

CONCRETE DROP CURB DETAIL

NOT TO SCALE

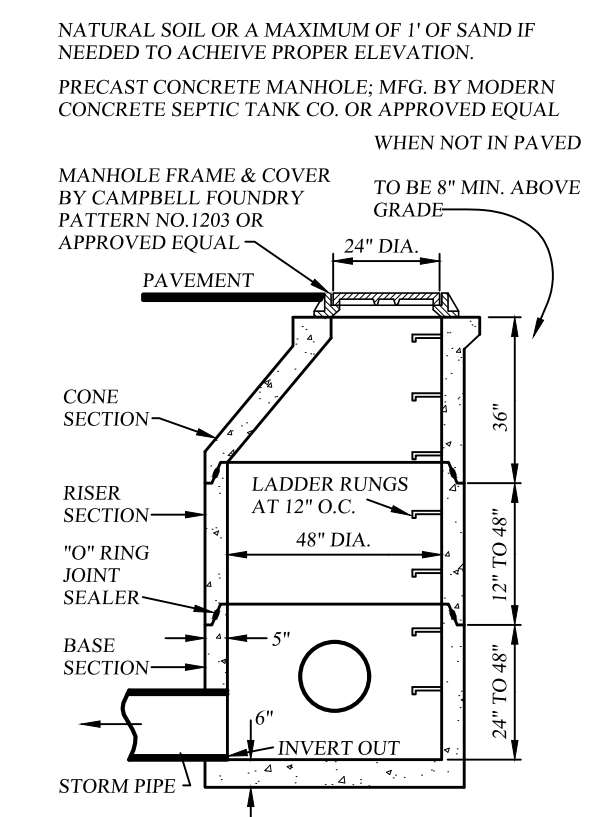


- PIPE ZONE BEDDING MATERIAL:
1. WATER MAINS: SAND OR RUN-OF-BANK GRAVEL, AS APPROVED BY SOILS ENGINEER.
 2. SEWER MAINS: 1/4" CRUSHED STONE.
- PIPE ZONE BACKFILL MATERIAL:
1. WATER MAINS: ON-SITE MATERIAL FREE OF STONE, CLAY FOREIGN MATERIAL OR FROZEN EARTH AS APPROVED BY SOILS ENGINEER.
 2. SEWER MAINS: 1/4" CRUSHED STONE.

PIPE BEDDING AND BACKFILL DETAIL

NOT TO SCALE

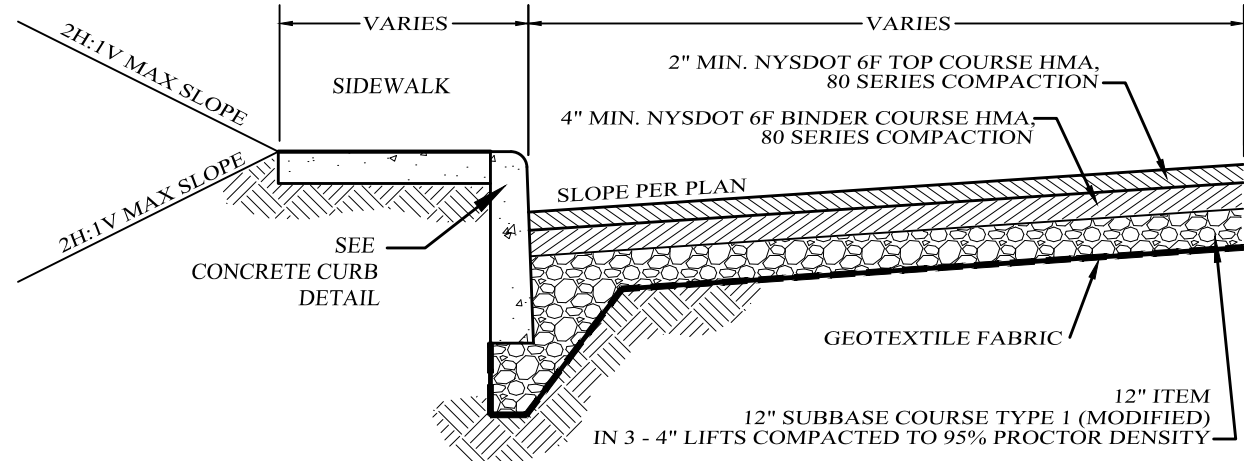
DETAIL



- ALL INSIDE CONCRETE SURFACES SHALL BE SEALED WITH TWO COATINGS OF A BITUMINOUS COATING TO MINIMIZE CORROSION.

STORM SEWER MANHOLE DETAIL

NOT TO SCALE



TYPICAL VILLAGE ROAD SECTION

NOT TO SCALE

LARK SUBDIVISION
VILLAGE OF BLOOMING GROVE, ORANGE COUNTY, NEW YORK
PROJECT TITLE

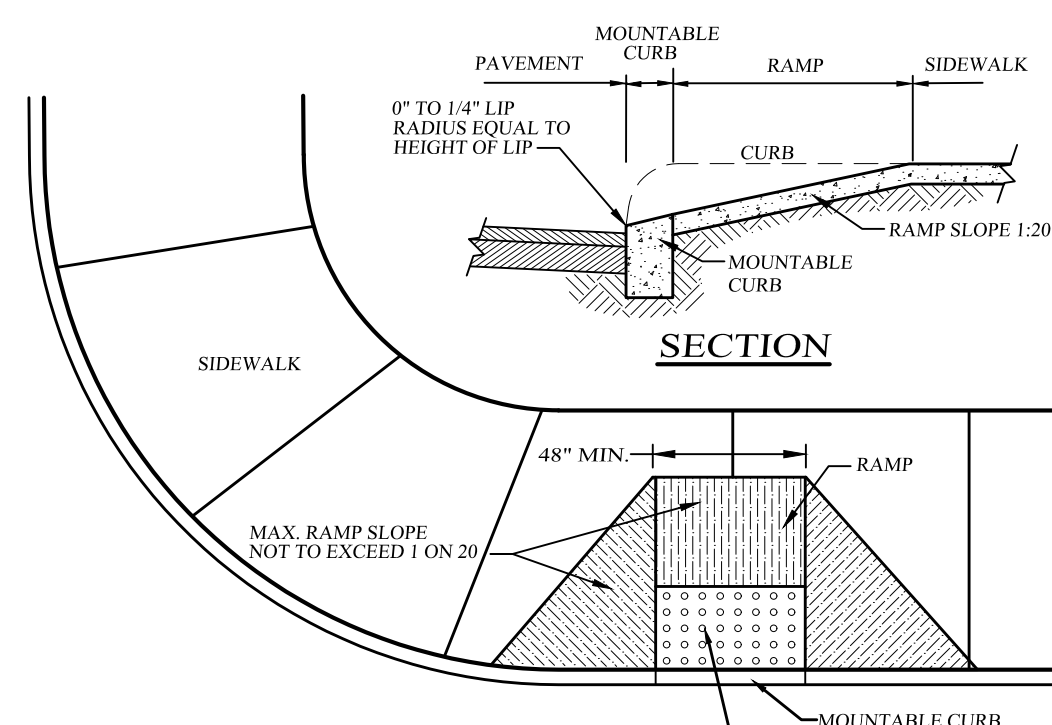
ROAD DETAILS
DRAWING TITLE

KIRK ROTHER, P.E.
CONSULTING ENGINEER, PLLC
5 Saint Stephens Lane, Warwick, NY 10990
(845) 988-0620

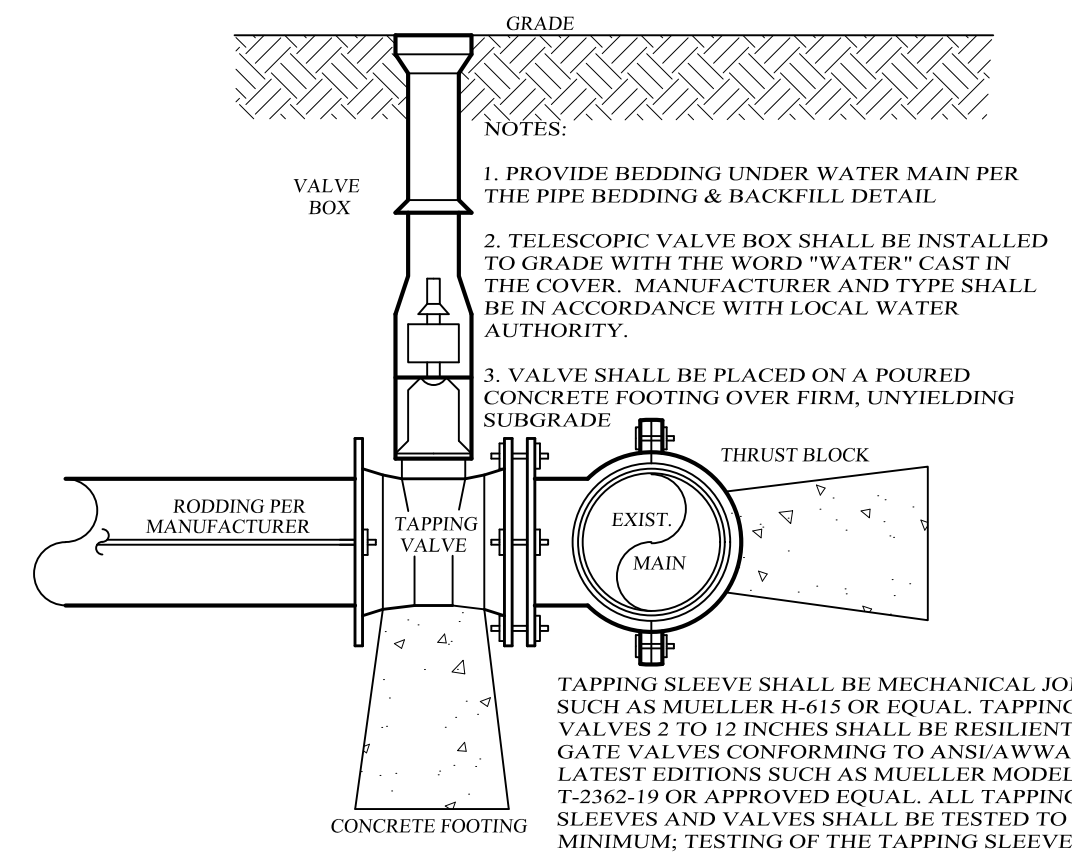
DATE	REVISIONS	KIRK ROTHER, P.E. N.Y.S. LIC. NO. 079053	DATE
09-18-25	INITIAL PREPARATION		

D.O.T. SHEET #	D.E.C. SHEET #	O.C.H.D. SHEET #	SHEET #
N.A.	N.A.	N.A.	8 OF 10
CAD #	PROJECT #	SCALE	
SP1	LARK	AS SHOWN	

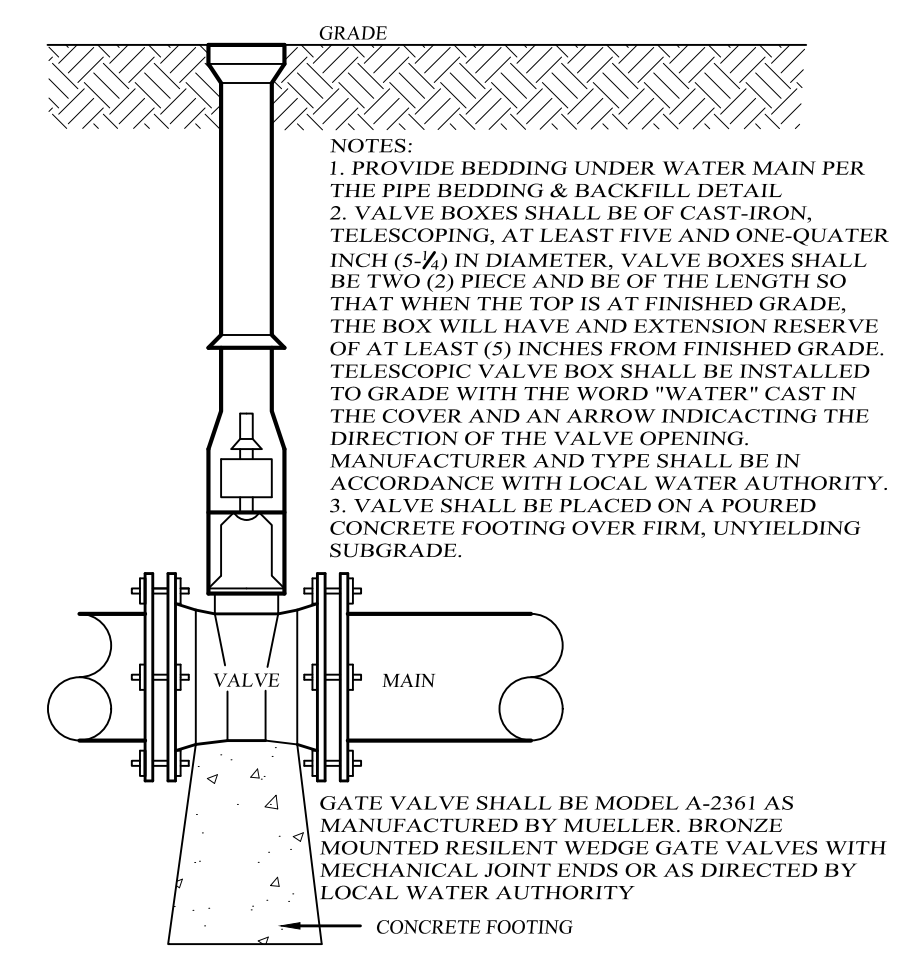
UNAUTHORIZED ALTERATIONS OR ADDITIONS TO A DOCUMENT BEARING THE SEAL OF A LICENSED PROFESSIONAL ENGINEER IS A VIOLATION OF SECTION 7209, SUBDIVISION 2 OF THE NEW YORK STATE EDUCATION LAW. REPRODUCTIONS OF THIS PLAN WHICH DO NOT BEAR THE ORIGINAL SEAL OF A LICENSED PROFESSIONAL ENGINEER SHALL BE CONSIDERED INVALID.



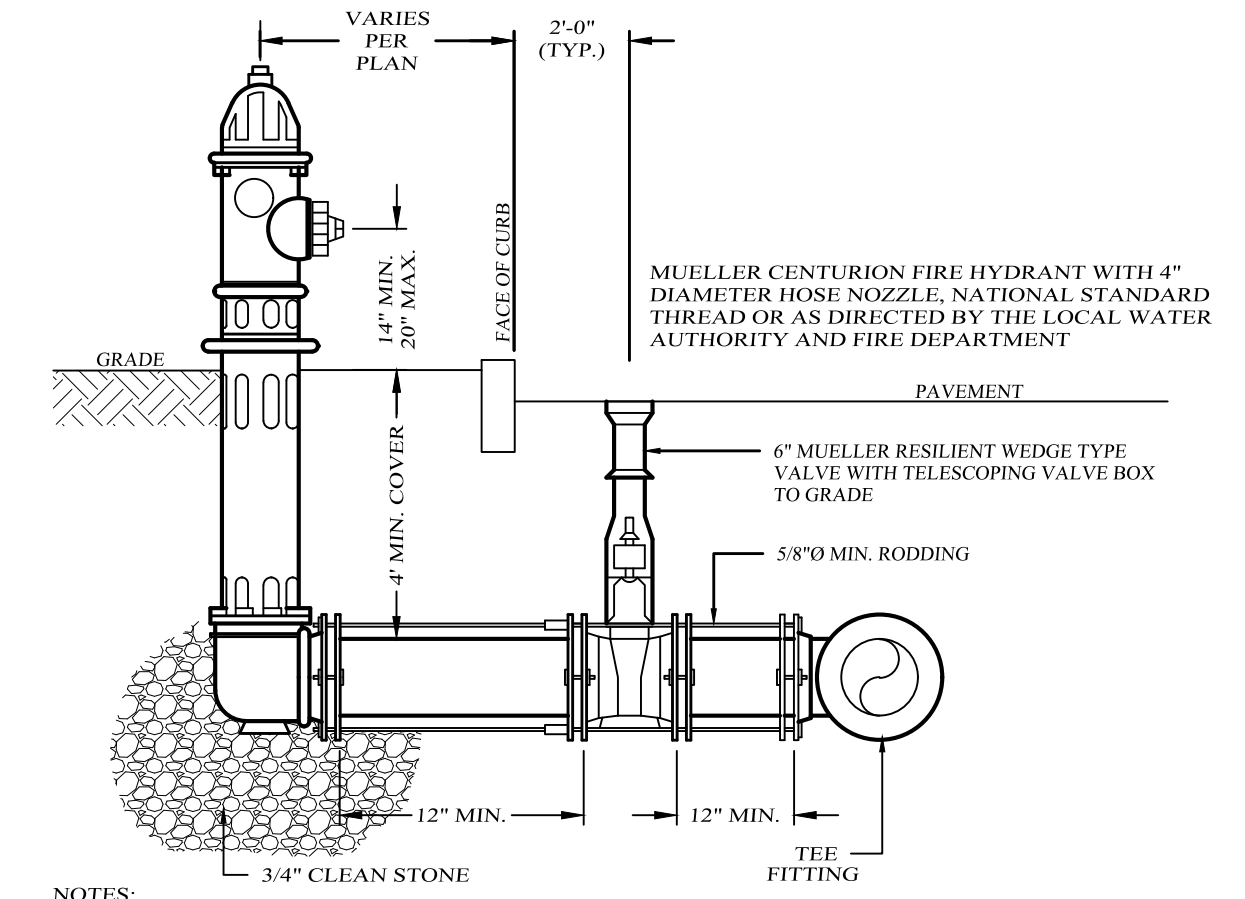
HANDICAP ACCESSIBLE RAMP DETAIL
NOT TO SCALE



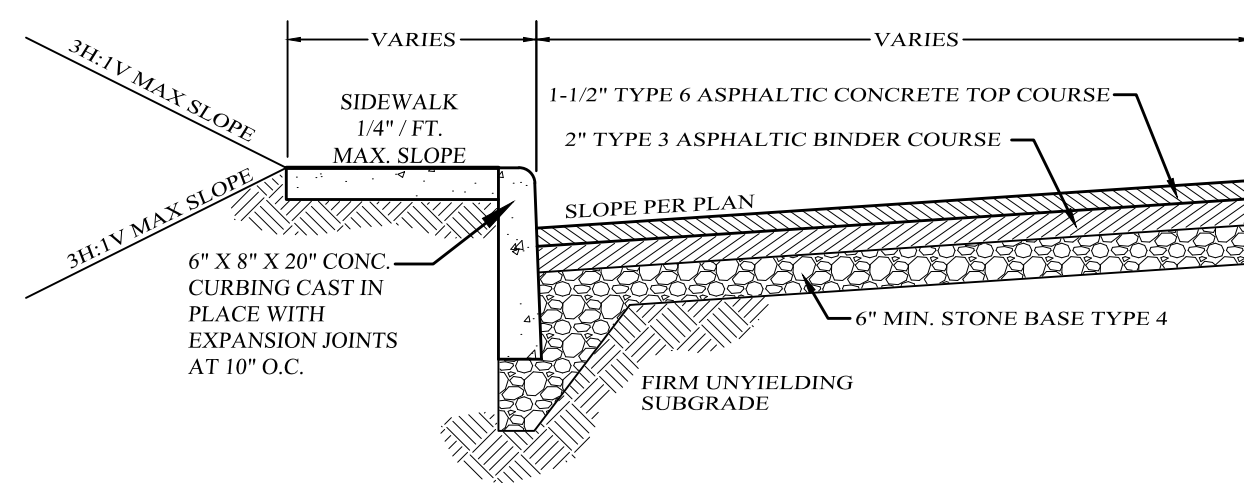
WATER MAIN TAPPING VALVE DETAIL
NOT TO SCALE



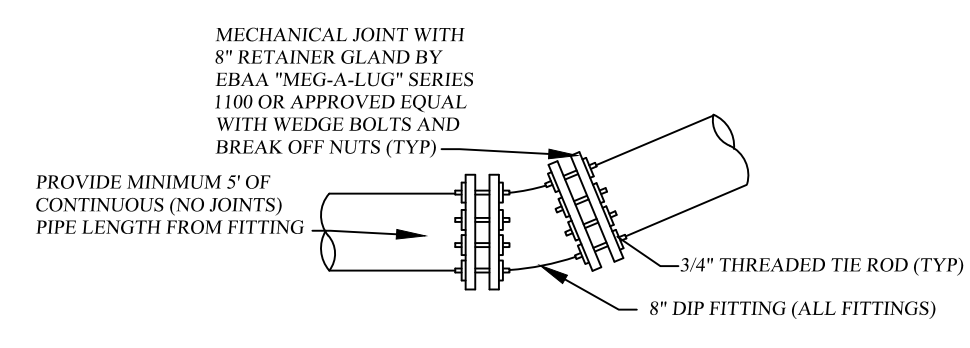
IN-LINE WATER VALVE DETAIL
NOT TO SCALE



FIRE HYDRANT DETAIL
NOT TO SCALE

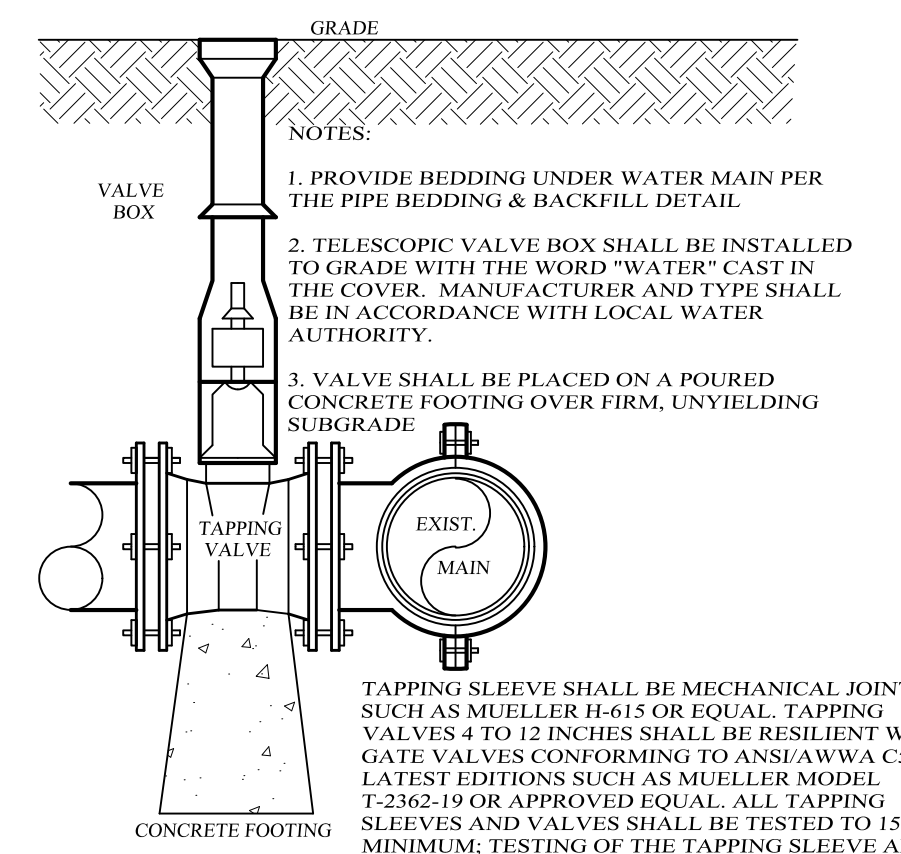


TYPICAL PAVEMENT SECTION
PARKING LOTS & DRIVEWAYS
NOT TO SCALE

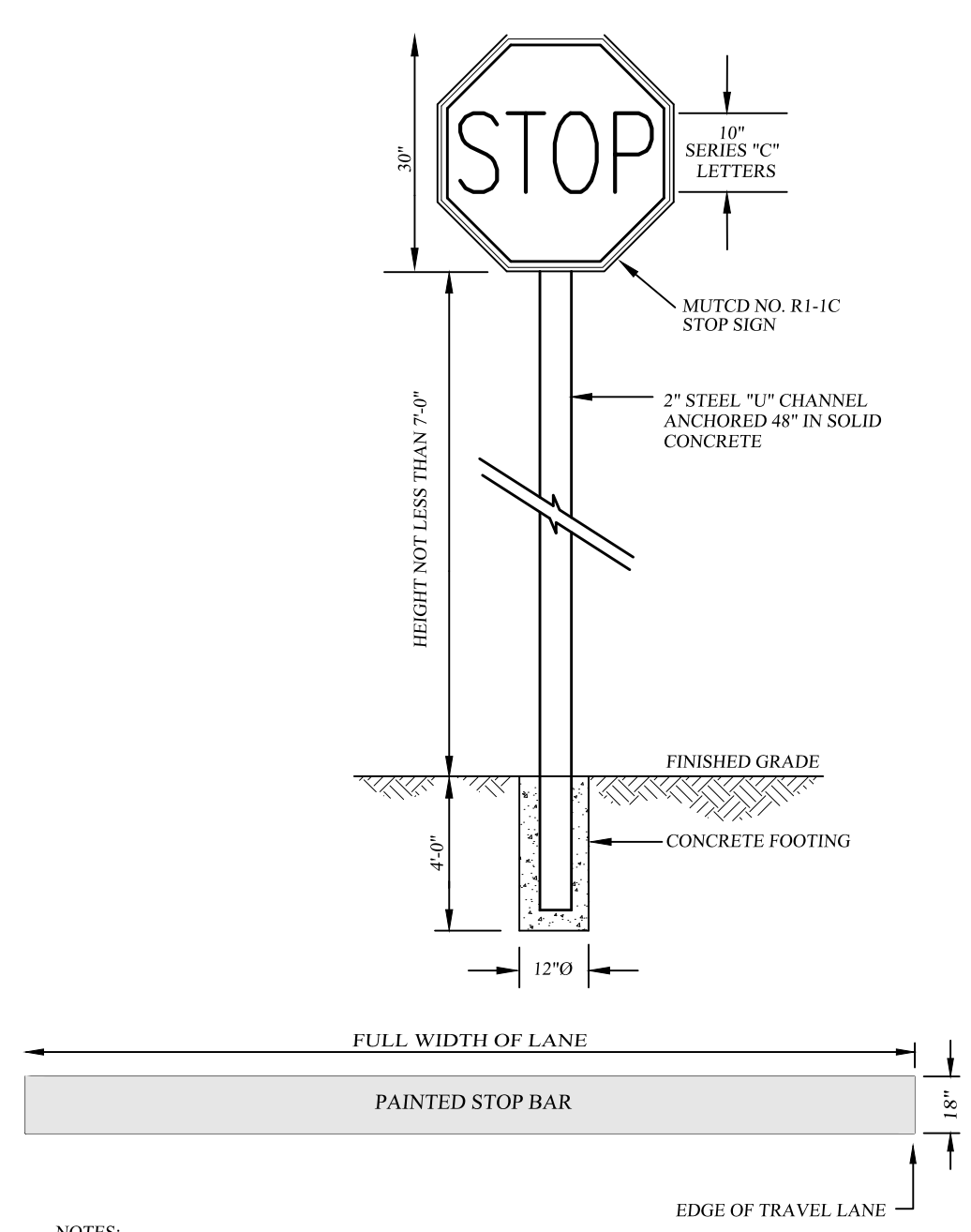


RESTRAIN ALL JOINTS WITHIN 90° FEET OF FITTING
RESTRAIN ALL JOINTS WITHIN 45° FEET OF FITTING
RESTRAIN ALL JOINTS WITHIN 22.5° FEET OF FITTING
RESTRAIN ALL JOINTS WITHIN 11.5° FEET OF FITTING

PIPE RESTRAINT DETAIL
NOT TO SCALE

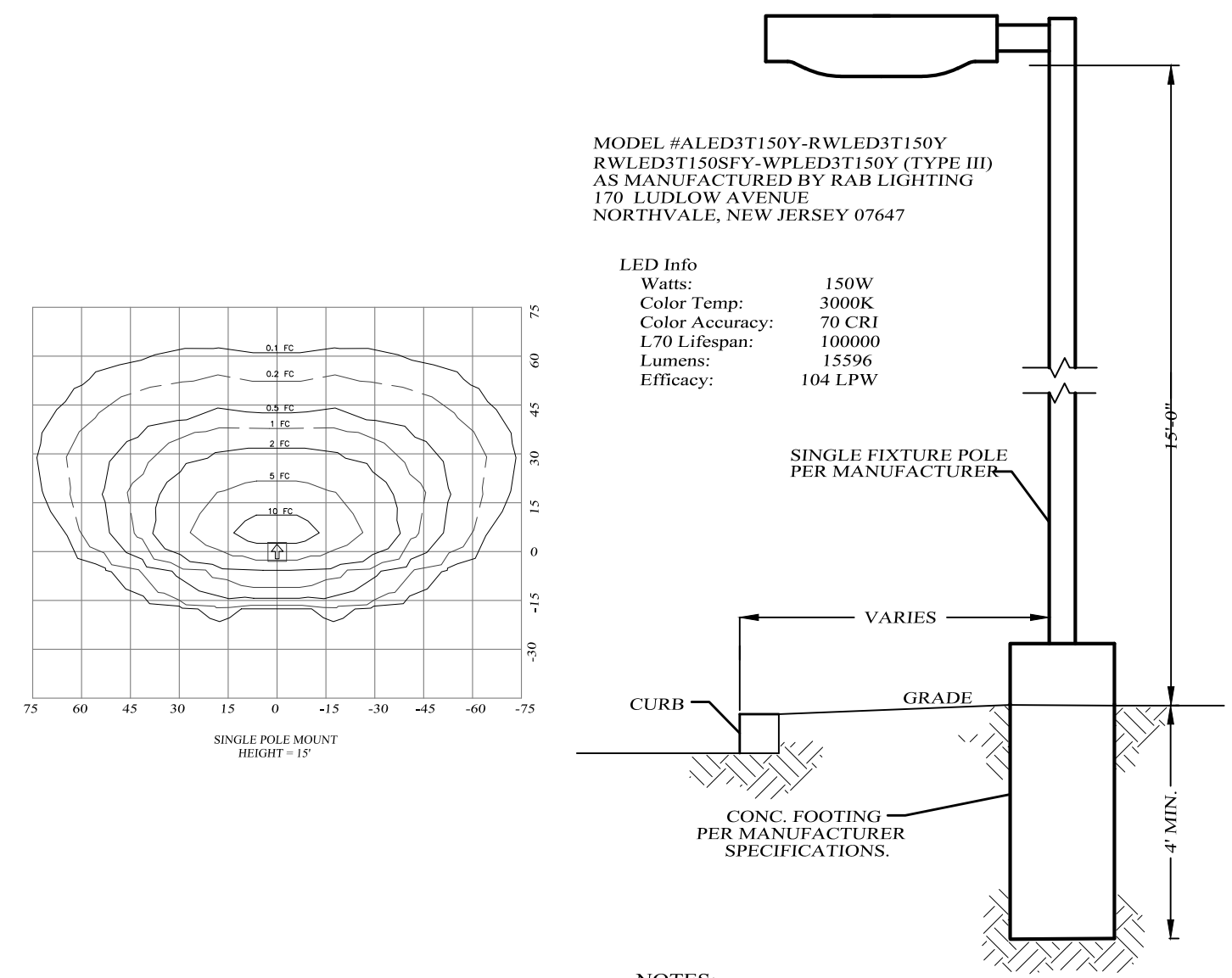


WATER MAIN TAPPING VALVE DETAIL
NOT TO SCALE



INSTALLATION AND MATERIALS SHALL CONFORM TO THE REQUIREMENTS SET FORTH IN SECTION 660 OF NYS DOT STANDARDS AND SPECIFICATIONS, LATEST REVISION.

STOP BAR AND SIGN DETAIL
NOT TO SCALE



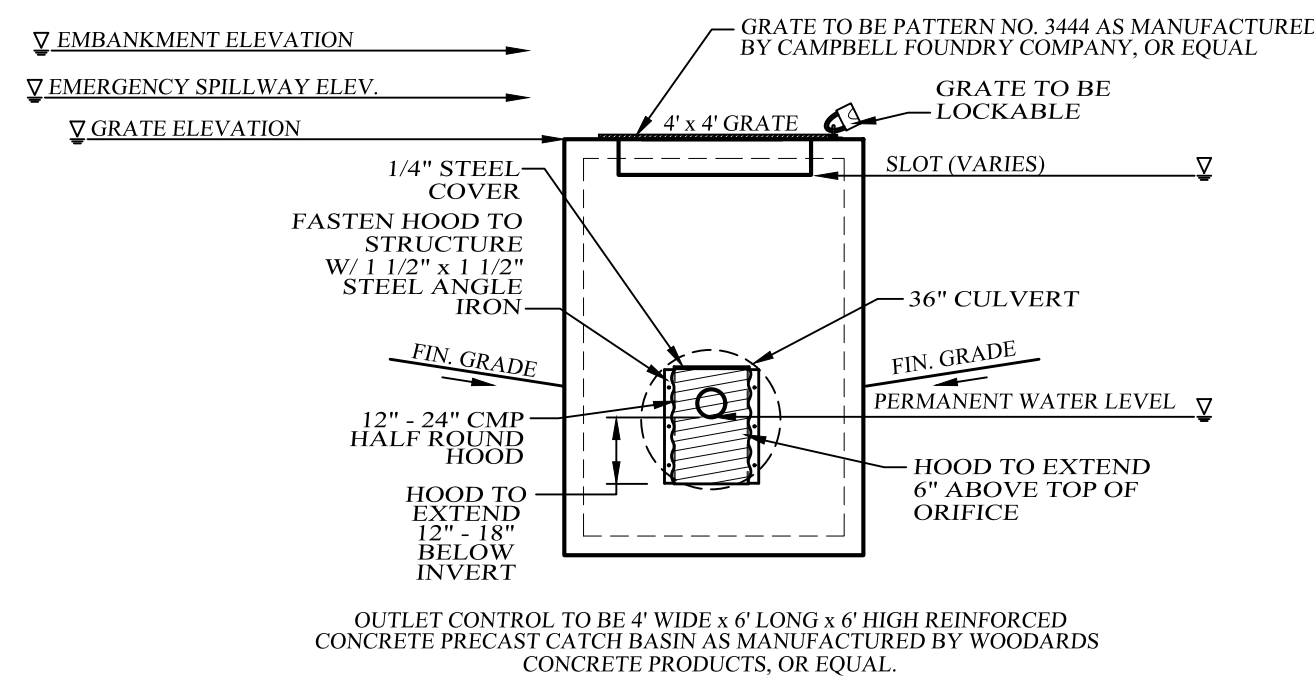
POLE MOUNTED SINGLE LIGHT DETAIL
NOT TO SCALE

LARK SUBDIVISION
VILLAGE OF BLOOMING GROVE, ORANGE COUNTY, NEW YORK
PROJECT TITLE

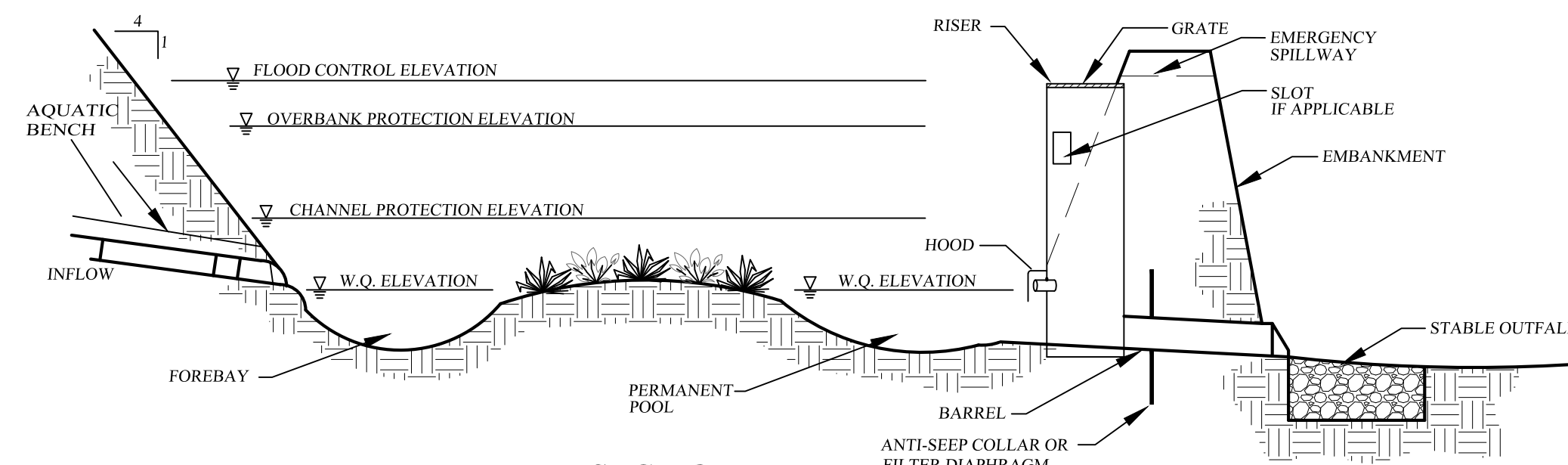
SITE DETAILS
DRAWING TITLE

KIRK ROTHER, P.E.
CONSULTING ENGINEER, PLLC
5 Saint Stephens Lane, Warwick, NY 10990
(845) 988-0620

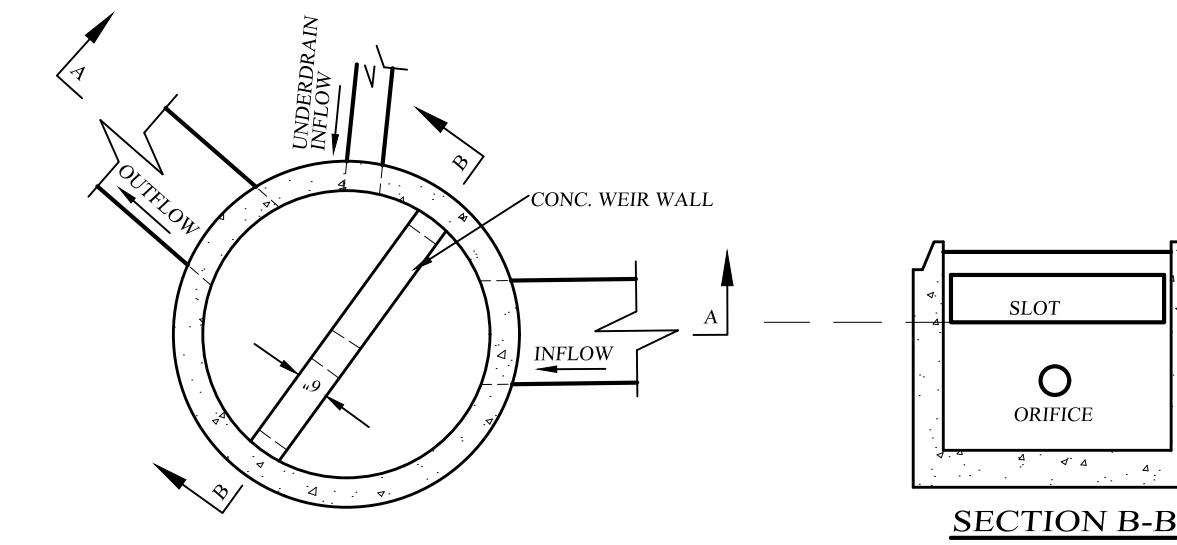
11-12-25	INITIAL PREPARATION	KIRK ROTHER, P.E.	N.Y.S. LIC. NO. 079053	DATE	
DATE	REVISIONS	D.O.T. SHEET #	D.E.C. SHEET #	O.C.H.D. SHEET #	SHEET #
		N.A.	N.A.	N.A.	9 OF 10
		CAD # LARK	PROJECT #	SCALE	
		SP1	LARK SKETCH	AS SHOWN	



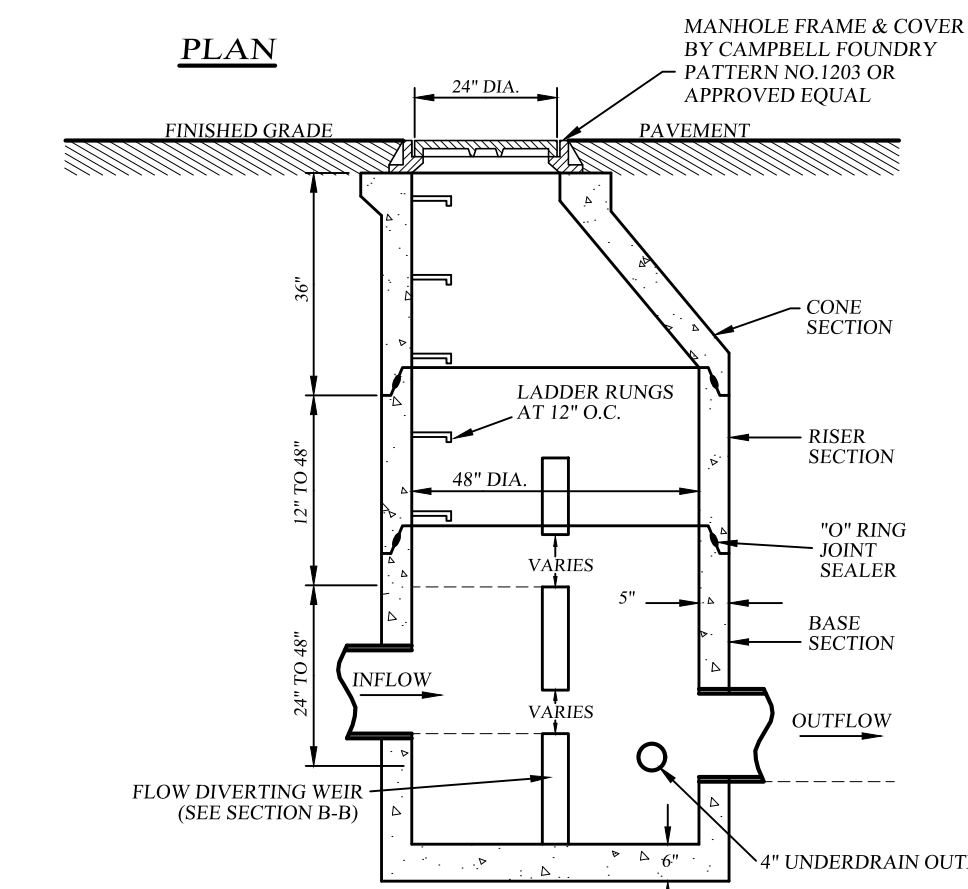
**POND 5B
OUTLET CONTROL DETAIL**
NOT TO SCALE



**SECTION
WET DETENTION POND
TYPICAL WATER QUALITY DETENTION POND SECTION**
NOT TO SCALE
GENERAL DESIGN
SEE PLAN



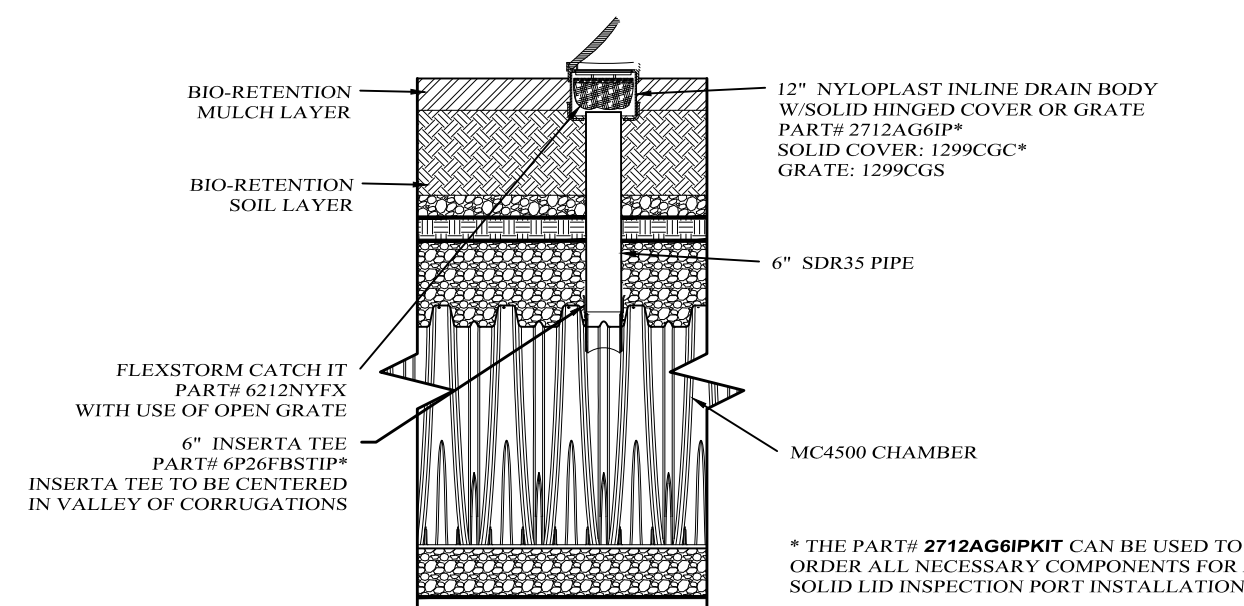
SECTION B-B



SECTION A-A

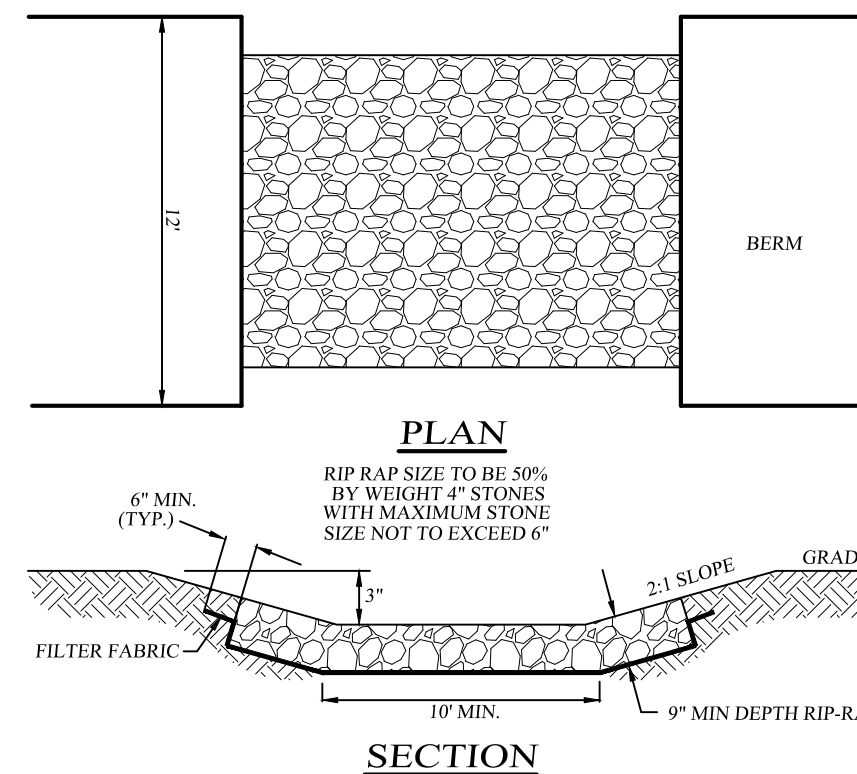
MANHOLES SHALL BE PLACED DIRECTLY ON UNDISTURBED NATURAL SOIL OR A MAXIMUM OF 1" OF SAND IF NEEDED TO ACHIEVE PROPER ELEVATION.
PRECAST CONCRETE MANHOLE, MFG. BY MODERN CONCRETE SEPTIC TANK CO. OR APPROVED EQUAL.

O.C.S. DRAINAGE MANHOLE 2F
NOT TO SCALE

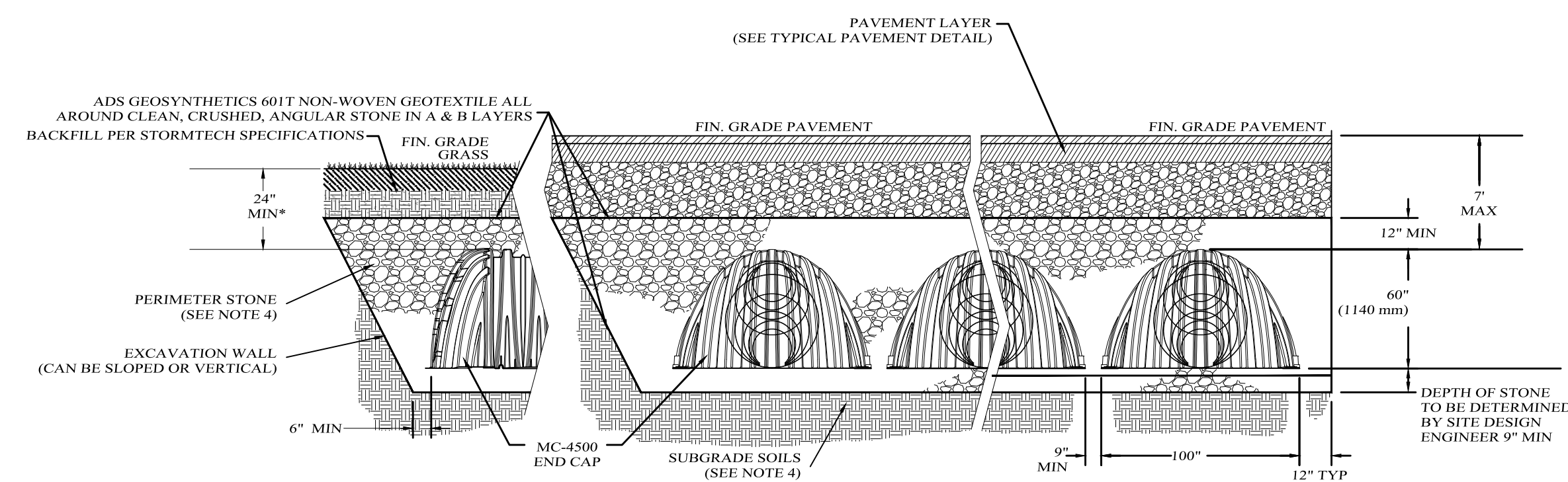


NOTE:
1. INSTALLATION AND REQUIRED QUANTITY OF INSPECTION PORTS TO BE PER MATERIAL SPECIFICATIONS.

MC-4500 6" INSPECTION PORT DETAIL
NOT TO SCALE



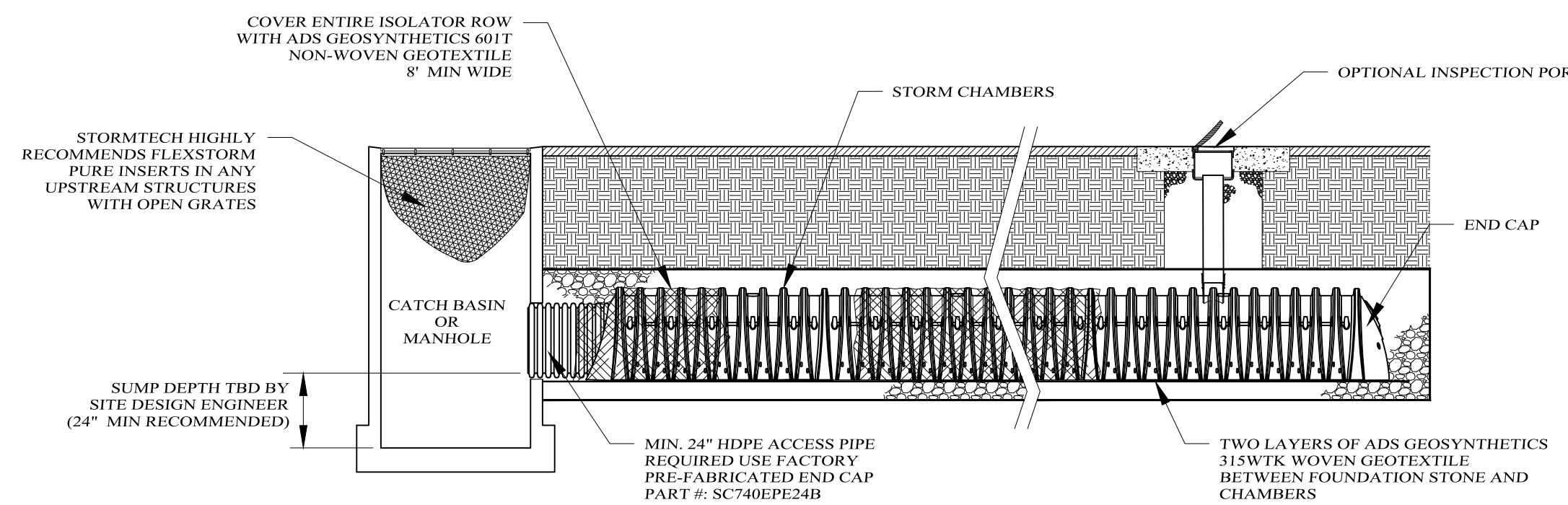
EMERGENCY SPILLWAY DETAIL
NOT TO SCALE



STORMTECH MC-4500 CHAMBER SYSTEM
*FOR COVER DEPTHS GREATER THAN 7.0' PLEASE CONTACT STORMTECH
NOT TO SCALE

- NOTES:
- REFER TO STORMTECH'S DESIGN MANUAL AND INSTALLATION MANUAL FOR DETAILED INSTALLATION INSTRUCTIONS AND FILL MATERIAL SPECIFICATIONS.
 - MC-4500 CHAMBERS SHALL CONFORM TO THE REQUIREMENTS OF ASTM F2418 "STANDARD SPECIFICATION FOR POLYPROPYLENE (PP) CORRUGATED WALL STORMWATER COLLECTION CHAMBERS".
 - MC-4500 CHAMBERS SHALL BE DESIGNED IN ACCORDANCE WITH ASTM F2787 "STANDARD PRACTICE FOR STRUCTURAL DESIGN OF THERMOPLASTIC CORRUGATED W/ FINISHES".
 - THE SITE DESIGN ENGINEER IS RESPONSIBLE FOR ASSESSING THE BEARING RESISTANCE (ALLOWABLE BEARING CAPACITY) OF THE SUBGRADE SOILS AND THE DEPTH OF FOUNDATION STONE WITH CONSIDERATION FOR THE RANGE OF EXPECTED SOIL MOISTURE CONDITIONS.
 - PERIMETER STONE MUST BE EXTENDED HORIZONTALLY TO THE EXCAVATION WALL FOR BOTH VERTICAL AND SLOPED EXCAVATION WALLS.
 - REQUIREMENTS FOR HANDLING AND INSTALLATION:
 - TO MAINTAIN THE WIDTH OF CHAMBERS DURING SHIPPING AND HANDLING, CHAMBERS SHALL HAVE INTEGRAL, INTERLOCKING STACKING LUGS.
 - TO ENSURE A SECURE JOINT DURING INSTALLATION AND BACKFILL, THE HEIGHT OF THE CHAMBER JOINT SHALL NOT BE LESS THAN 3".
 - TO ENSURE THE INTEGRITY OF THE ARCH SHAPE DURING INSTALLATION, A) THE ARCH STIFFNESS CONSTANT AS DEFINED IN SECTION 6.2.8 OF ASTM F2418 SHALL BE GREATER THAN OR EQUAL TO 500 LBS/FT², AND B) TO RESIST CHAMBER DEFORMATION DURING INSTALLATION AT ELEVATED TEMPERATURES (ABOVE 73° F / 23° C), CHAMBERS SHALL BE PRODUCED FROM REFLECTIVE GOLD OR YELLOW COLORS.

CONTACT STORMTECH AT 1-888-892-2694 WITH ANY QUESTIONS ON INSTALLATION REQUIREMENTS



ISOLATOR ROW DETAIL
NOT TO SCALE

INSPECTION & MAINTENANCE

- STEP 1) INSPECT ISOLATOR ROW FOR SEDIMENT
- INSPECTION PORTS (IF PRESENT)
 - REMOVE OPEN LID OR NYLOPLAST IN-LINE DRAIN
 - REMOVE AND CLEAN FLEXSTORM FILTER IF INSTALLED
 - USING A FLASHLIGHT AND STADIA ROD, MEASURE DEPTH OF SEDIMENT AND RECORD ON MAINTENANCE LOG
 - LOWER A CAMERA INTO ISOLATOR ROW FOR VISUAL INSPECTION OF SEDIMENT LEVELS (OPTIONAL)
 - IF SEDIMENT IS AT, OR ABOVE, 3" (80 mm) PROCEED TO STEP 2. IF NOT, PROCEED TO STEP 3.
 - ALL ISOLATOR ROWS
 - REMOVE COVER FROM STRUCTURE AT UPSTREAM END OF ISOLATOR ROW
 - USING A FLASHLIGHT, INSPECT DOWN THE ISOLATOR ROW THROUGH OUTLET PIPE
 - MIRRORS ON POLES OR CAMERAS MAY BE USED TO AVOID A CONFINED SPACE ENTRY
 - FOLLOW OSHA REGULATIONS FOR CONFINED SPACE ENTRY IF ENTERING MANHOLE
 - IF SEDIMENT IS AT, OR ABOVE, 3" (80 mm) PROCEED TO STEP 2. IF NOT, PROCEED TO STEP 3.
- STEP 2) CLEAN OUT ISOLATOR ROW USING THE JETVAC PROCESS
- A VACUUM CLEANING NOZZLE WITH REAR FACING SPREAD OF 45° (1.1 m) OR MORE IS PREFERRED
 - APPLY MULTIPLE PASSES OF JETVAC UNTIL BACKFLUSH WATER IS CLEAN
 - VACUUM STRUCTURE SUMP AS REQUIRED
- STEP 3) REPLACE ALL COVERS, GRATES, FILTERS, AND LIDS; RECORD OBSERVATIONS AND ACTIONS.
- STEP 4) INSPECT AND CLEAN BASINS AND MANHOLES UPSTREAM OF THE STORMTECH SYSTEM.

NOTES

- INSPECT EVERY 6 MONTHS DURING THE FIRST YEAR OF OPERATION. ADJUST THE INSPECTION INTERVAL BASED ON PREVIOUS OBSERVATIONS OF SEDIMENT ACCUMULATION AND HIGH WATER ELEVATIONS.
- CONDUCT JETTING AND VACTORING ANNUALLY OR WHEN INSPECTION SHOWS THAT MAINTENANCE IS NECESSARY.

**LARK
SUBDIVISION**
VILLAGE OF BLOOMING GROVE, ORANGE COUNTY, NEW YORK
PROJECT TITLE

**CONCEPTUAL
STORMWATER
DETAILS**
DRAWING TITLE

KIRK ROTHER, P.E.
CONSULTING ENGINEER, PLLC
5 Saint Stephens Lane, Warwick, NY 10990
(845) 988-0620

DATE	REVISIONS	DATE
09-18-25	INITIAL PREPARATION	

D.O.T. SHEET #	D.E.C. SHEET #	O.C.H.D. SHEET #	SHEET #
N.A.	N.A.	N.A.	10 OF 10

UNAUTHORIZED ALTERATIONS OR ADDITIONS TO A DOCUMENT BEARING THE SEAL OF A LICENSED PROFESSIONAL ENGINEER IS A VIOLATION OF SECTION 7209, SUBDIVISION 2 OF THE NEW YORK STATE EDUCATION LAW. REPRODUCTIONS OF THIS PLAN WHICH DO NOT BEAR THE ORIGINAL SEAL OF A LICENSED PROFESSIONAL ENGINEER SHALL BE CONSIDERED INVALID.