



SOURCE: USGS US TOPO 7.5 MINUTE MAP FOR MONROE NY, 2019

LOCATION MAP

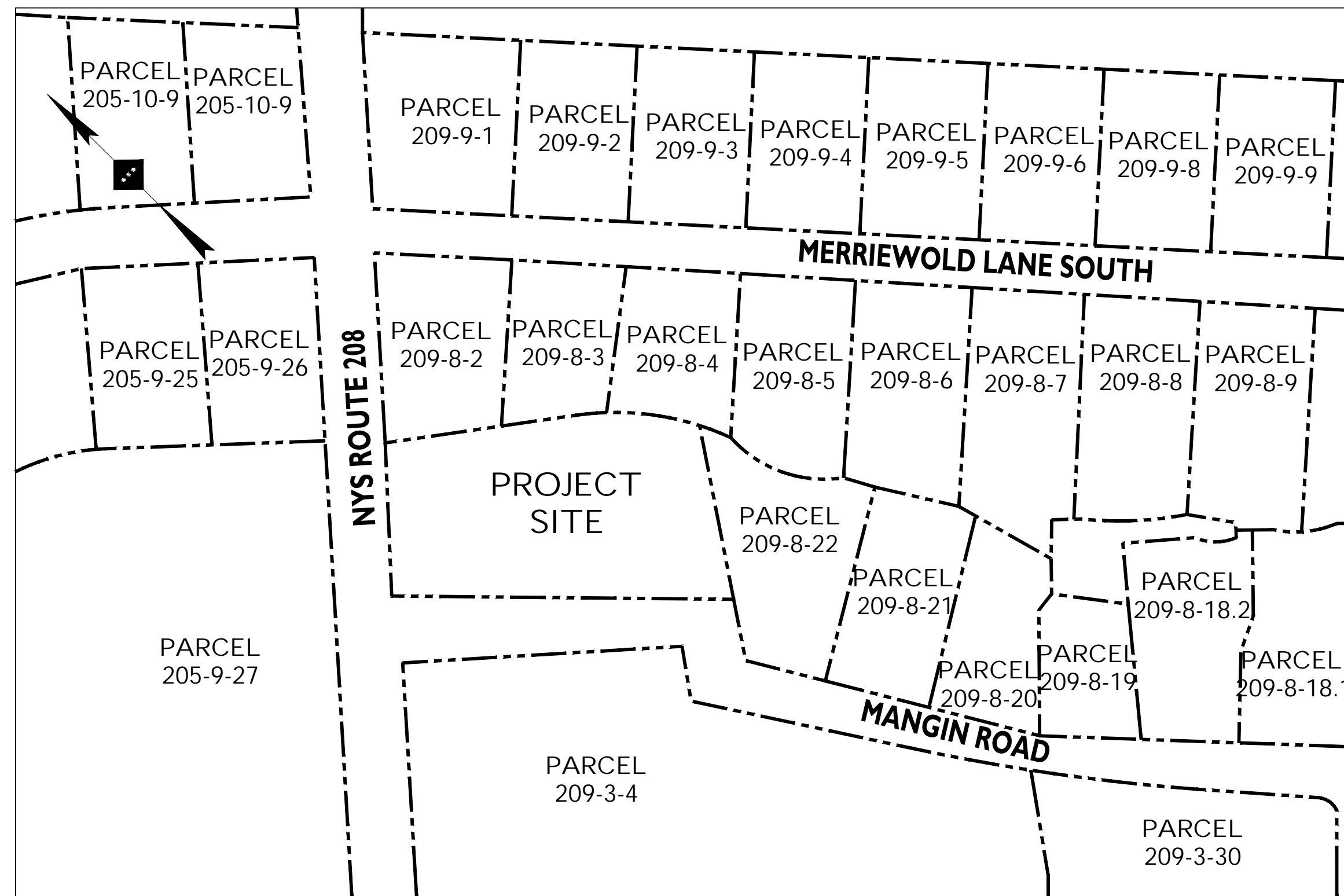
SCALE: 1" = 500±



SOURCE: GOOGLE EARTH PRO IMAGERY, RETRIEVED 5/18/2022

AERIAL MAP

SCALE: 1" = 100±



SOURCE: ORANGE COUNTY GIS PARCEL VIEWER, RETRIEVED 5/18/2022

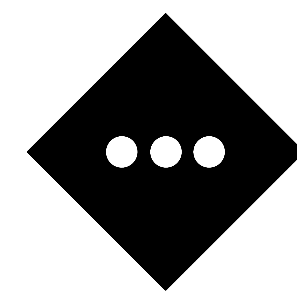
TAX MAP

SCALE: 1" = 100±

SITE PLANS FOR PEPPERMINT SUPERMARKET

PARCEL 209-8-1
5 MANGIN ROAD
VILLIAGE OF SOUTH BLOOMING GROVE, ORANGE COUNTY, NEW YORK

PLANS PREPARED BY:



STONEFIELD
engineering & design

Rutherford, NJ · New York, NY · Boston, MA
Princeton, NJ · Tampa, FL · Detroit, MI
www.stonefieldeng.com

Headquarters: 92 Park Avenue, Rutherford, NJ 07070
Phone 201.340.4468 · Fax 201.340.4472

PLAN REFERENCE MATERIALS:

1. THIS PLAN SET REFERENCES THE FOLLOWING DOCUMENTS INCLUDING, BUT NOT LIMITED TO:
 - AERIAL MAP OBTAINED FROM GOOGLE EARTH PRO IMAGERY, RETRIEVED 5/18/2022
 - LOCATION MAP OBTAINED FROM USGS QUADRANGLE 7.5 MINUTE SERIES MAP FOR MONROE NY DATED 2019
 - TAX AND ZONING MAP OBTAINED FROM ORANGE COUNTY GIS PARCEL VIEWER, RETRIEVED 5/18/2022
 - OUTBOUND AND TOPOGRAPHIC SURVEY PERFORMED BY CLEARPOINT SERVICES, LLC, DATED 12/15/2021
2. ALL REFERENCE MATERIAL LISTED ABOVE SHALL BE CONSIDERED A PART OF THIS PLAN SET AND ALL INFORMATION CONTAINED WITHIN THESE MATERIALS SHALL BE UTILIZED IN CONJUNCTION WITH THIS PLAN SET. THE CONTRACTOR IS RESPONSIBLE TO OBTAIN A COPY OF EACH REFERENCE AND REVIEW IT THOROUGHLY PRIOR TO THE START OF CONSTRUCTION.

SHEET INDEX	
DRAWING TITLE	SHEET #
COVER SHEET	C-1
SITE PLAN	C-2
CONSTRUCTION DETAILS	C-3



Know what's below
Call before you dig.

SITE PLANS

**PEPPERMINT
SUPERMARKET**

PARCEL 209-8-1
5 MANGIN ROAD
VILLIAGE OF SOUTH BLOOMING GROVE
ORANGE COUNTY, NEW YORK



STONEFIELD
engineering & design

SCALE: AS SHOWN PROJECT ID: RUT-220143

TITLE:

COVER SHEET

DRAWING:

C-1

NOT APPROVED FOR CONSTRUCTION

STONEFIELD
engineering & design

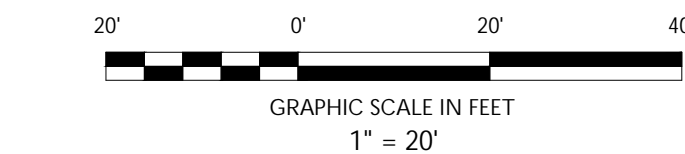
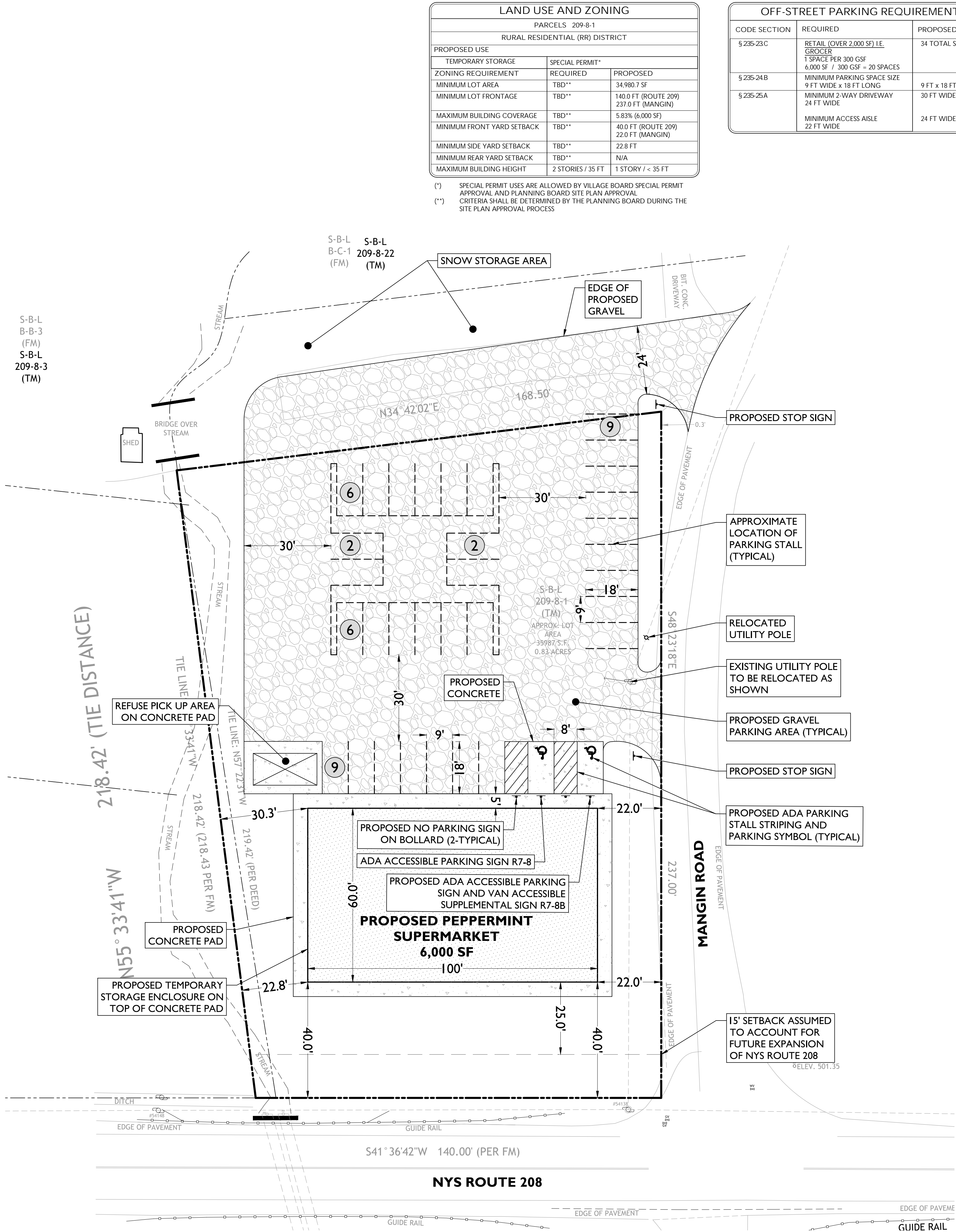
Rutherford, NJ · New York, NY · Boston, MA
Princeton, NJ · Tampa, FL · Detroit, MI
www.stonefieldeng.com

Headquarters: 92 Park Avenue, Rutherford, NJ 07070
Phone 201.340.4468 · Fax 201.340.4472

REVISIONS
DATE
BY
DESCRIPTION

1
7/14/2022
MC
BY
DATE
ISSUE

Z:\RUTHERFORD\22012\22012.DWG (BROUGHTON) MANAGEMENT - 4.6.6 RESERVED LANE 5.8.7 MANGIN ROAD 5.8.8 BLOOMING GROVE, INCA/DR/OT/XXX/4.6.6-3T.DWG



SITE PLANS

PEPPERMINT
SUPERMARKET



STONEFIELD
engineering & design

SCALE: 1" = 20' PROJECT ID: RUT-220143

TITLE:

SITE PLAN

DRAWING:

C-2

NOT APPROVED FOR CONSTRUCTION

STONEFIELD
engineering & design

Rutherford, NJ · New York, NY · Boston, MA
Princeton, NJ · Tampa, FL · Detroit, MI
www.stonefielddeng.com

Headquarters: 92 Park Avenue, Rutherford, NJ 07070
Phone 201.340.4468 · Fax 201.340.4472

PARCEL 209-8-1
5 MANGIN ROAD
VILLAGE OF SOUTH BLOOMING GROVE
ORANGE COUNTY, NEW YORK

REVISED PER VILLAGE AND CLIENT COMMENTS

DESCRIPTION

MC BY DATE ISSUE

1 7/16/2022

Headquarters: 92 Park Avenue, Rutherford, NJ 07070
Phone 201.340.4468 · Fax 201.340.4472